



POCKET GUIDE
TO PROFESSIONAL
REGISTRATION

for engineers and technicians

2017

Foreword

Operating under a Royal Charter, the Engineering Council is charged with regulating the UK engineering profession on behalf of society. We hold the national Register of those who have satisfied their peers of their competence and commitment as Engineering Technicians, Incorporated Engineers, Chartered Engineers and ICT Technicians. We set the education standards for engineering programmes that provide the underpinning knowledge and understanding required to practise engineering, as well as setting standards for professional development. We can only achieve this through the commitment of the entire professional engineering community, supported by academics and employers.

Professional registration provides the benchmark which allows the public to have confidence and trust that the engineers and technicians on our Register have met globally recognised professional standards.

Nearly a quarter of a million men and women are currently listed on our Register. However, the UK has an ageing population, and with the number of registrants aged over 60 representing more than a third of those on the Register, we must work hard to maintain a talent pipeline to meet future skills requirements. We therefore welcome the joint initiatives that are underway to ensure that more people enter professional engineering careers and that those who are already professionally registered remain so throughout their working life. This is a strategic imperative for the nation, if we are to meet the engineering, safety and technological needs of the future.

Alasdair Coates BEng(Hons) MSc CEng FICE MCIHT CMIOASH
CEO, Engineering Council

About this guide

This pocket guide has been developed for use by all those working within the professional engineering community. It aims to provide key information about registration with the Engineering Council and explains the relationship between the many organisations working within this community. More detailed information and other Engineering Council publications are available on the internet.

The guide has been produced in both hard copy and online as an ebook. Whilst data contained in the hard copy was correct (as supplied to the Engineering Council) at the time of publication, subsequent changes are inevitable. The Engineering Council will endeavour to keep the ebook version up to date as changes are notified to the organisation, but cannot be held responsible for incorrect data. Therefore, it is advisable to check the primary source of information before acting upon any of the information provided.

Should you come across incorrect information contained within this guide, please contact marketing@engc.org.uk with an update.

Contents

| | |
|--|-------|
| Engineering Council | 4 |
| The professional engineering community | 6 |
| Professional registration | 8-11 |
| How to become professionally registered | 12-14 |
| The Standards | 15-17 |
| Accreditation and approval | 18 |
| Work-based degree programmes leading to registration | 19 |
| Registration fees | 20 |
| International recognition | 21 |
| Guidance for professional engineers | 22-24 |
| Table of licensed institutions | 26-27 |
| Professional engineering institutions | 29-63 |
| Professional Affiliates | 64-86 |
| Useful weblinks | 88 |
| Engineering Council publications | 89 |

Engineering Council

*Established in 2002. Earliest forebears: Council of Engineering Institutions (1965) and Engineering Council UK (2002).
Incorporated by Royal Charter in 1981.*

As the UK regulatory body for the engineering profession, the Engineering Council sets and maintains internationally recognised standards of professional competence and ethics. These are detailed in the UK Standard for Professional Engineering Competence (UK-SPEC).

Mission: To maintain internationally recognised standards of competence and commitment for the engineering profession, and to license competent institutions to champion the standards for the deliverance of public benefit.

Vision: That society continues to have confidence and trust in the engineering profession.

Companies House Incorporation number: RC000779
Registered Charity number: 286142

Engineering Council Register

The Engineering Council holds the national Register of over 222,500:

- Engineering Technicians (EngTech)
- Incorporated Engineers (IEng)
- Chartered Engineers (CEng)
- Information and Communications Technology Technicians (ICTech)

Holders of these titles must be members of a professional engineering institution licensed by the Engineering Council or, in some cases, a Professional Affiliate. In order to achieve registered status individuals will have demonstrated to their institution that they possess a range of technical and personal competences and are also committed to keeping these up to date, and to acting with integrity in the public interest.

The award and retention of these titles therefore ensures that employers, government and wider society - both in the UK and overseas - can have confidence in the knowledge, experience and commitment of engineers and technicians on the Register.

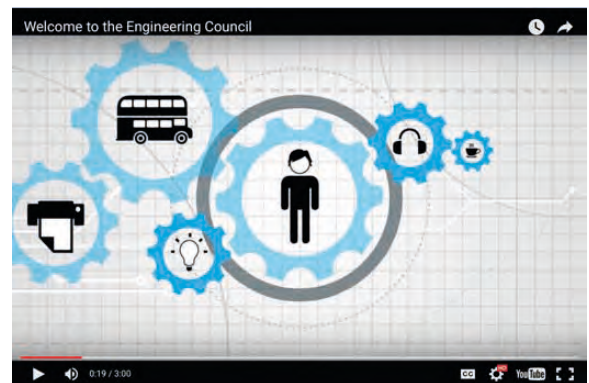
In addition, there are over 8,500 engineers and technicians on the national Register holding interim registration having registered their intention to work towards one of the professional titles above. For more information on interim registration please [click here](#)

International representation of engineers

The Engineering Council continually works to increase recognition of its registrants. As an active member of the profession's international organisations and agreements, it represents the interests of UK engineers and technicians and exerts strong influence internationally, which benefits individuals, businesses and the UK system of engineering education. For more information on international activity please [click here](#)

Governance

The Engineering Council is governed by a 22 member Board of Trustees, who are appointed in accordance with its Bye-laws. Fifteen are appointed to represent the licensed professional engineering institutions, and seven are appointed by EngineeringUK to represent industry. Much of the organisation's work is undertaken through committees and panels, comprising wide representation from the profession, and the assistance of numerous volunteers.

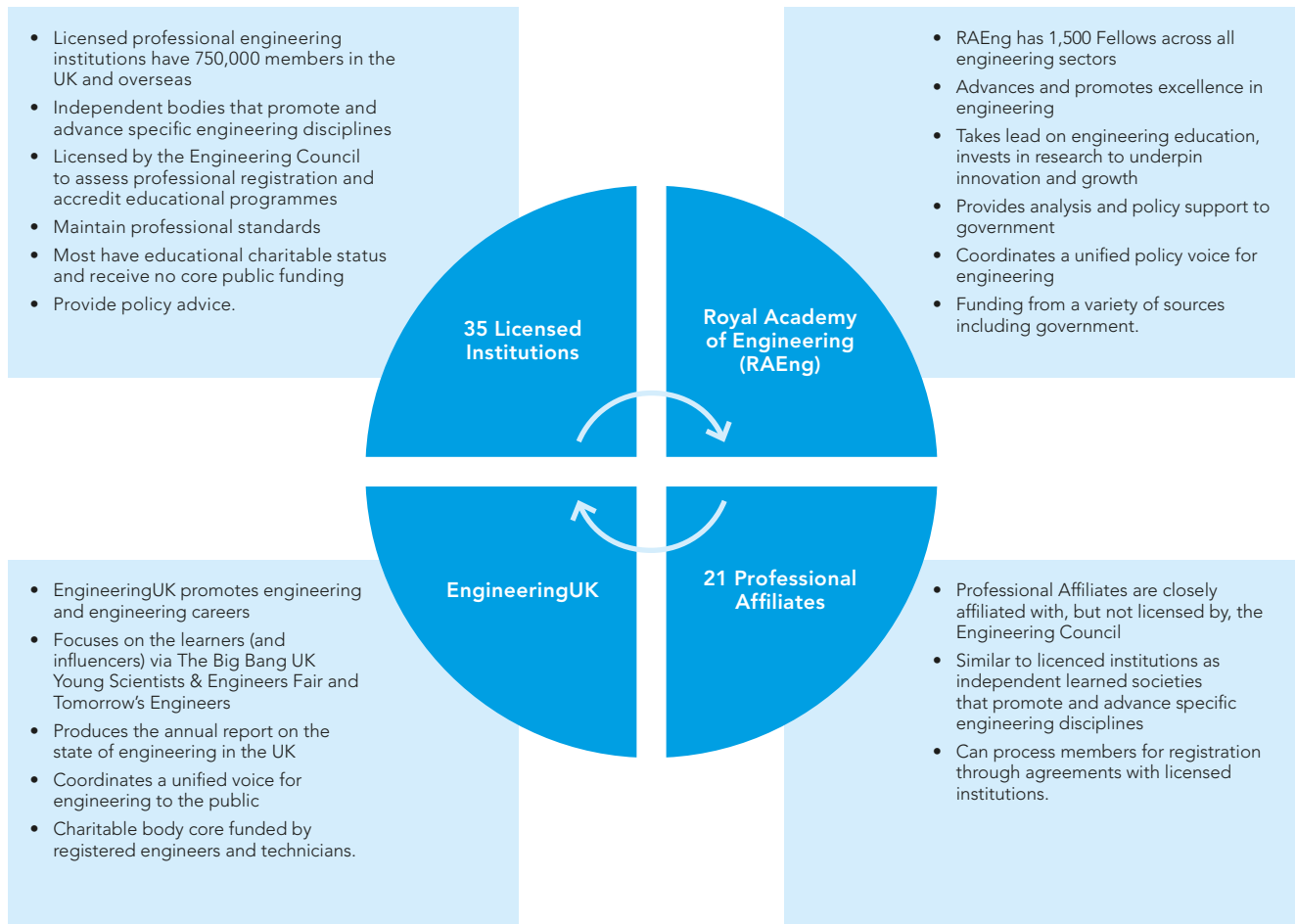


The professional engineering community

The sheer size and diversity of engineering in the UK means that no one professional body can represent the whole sector. For this reason, there are currently over 50 organisations with such an interest, known informally as the professional engineering community. They work both collectively and individually with government, industry, academia and a range

of other bodies to represent, promote and support the profession, while ensuring that UK registered engineers and technicians maintain the highest standards and reputation globally. The Engineering Council is part of this community, which also comprises the following bodies:

Our partners at the heart of the engineering profession



Professional registration

What is professional registration?

Professional registration is:

- Recognition, through membership of a relevant professional engineering institution, that an individual's competence and commitment has been assessed, and they have attained the standard required for admission to the national Register at the appropriate level – EngTech, IEng, CEng and ICTech
- Open to any competent practising engineer or technician, with different levels and pathways to registration available
- Developed to provide a progressive registration structure.

Why register?

The post-nominals EngTech, IEng, CEng or ICTech provide benefits for individuals, including:

- Greater influence within own organisation and industry
- Demonstration of work ethic valued by employers and customers
- Improved career prospects and employability
- International recognition of competence and commitment
- Evidence of expertise and hard work
- Higher earning potential
- Enhanced status leading to higher self-esteem
- Recognition as authorised countersignatory.

To read first-hand experience of how registration has benefitted the careers of professional engineers across numerous sectors, [click here](#) to view our case studies.



Benefits for employers:

The many benefits for organisations of employing professionally registered engineers and technicians are explained in more detail on the [Engineering Council's](#) website. These include:

- Globally accepted third party competence assurance for customers and clients
- Increased technical and managerial credibility
- Assurance that the employee has satisfied a rigorous assessment of their engineering competence
- Confirmation that the engineering credentials being claimed are actually held
- Internationally recognised titles enable greater flexibility in staff mobility
- Positive impact on recruiting and retention, and indication of commitment to staff
- Possible mitigation of potential liabilities if an accident or incident occurs
- Knowledge that registered employees have a personal obligation to abide by a code of conduct
- Enhanced company reputation through ethical behaviour
- A means to satisfy requirements of Quality Management Systems eg ISO 9001:2008.

Benefits for society:

- Society can have confidence in the work of engineers and engineering technicians whether they operate in the UK or globally
- Assurance of ethical and sustainable behaviour.

The four categories of professional registration

Engineering Technician

Engineering Technicians apply proven techniques and procedures to the solution of practical engineering problems.

Engineering Technicians are required to apply safe systems of work and are able to demonstrate:

- Evidence of their contribution to either the design, development, manufacture, commissioning, decommissioning, operation or maintenance of products, equipment, processes or services
- Supervisory or technical responsibility
- Effective interpersonal skills in communicating technical matters
- Commitment to professional engineering values.

www.engc.org.uk/engtech



Chartered Engineer

Chartered Engineers develop solutions to engineering problems using new or existing technologies, through innovation, creativity and change and/or they may have technical accountability for complex systems with significant levels of risk.

Chartered Engineers are able to demonstrate:

- The theoretical knowledge to solve problems in new technologies and develop new analytical techniques
- Successful application of the knowledge to deliver innovative products and services and/or take technical responsibility for complex engineering systems
- Accountability for project, finance and personnel management and managing trade-offs between technical and socio-economic factors
- Skill sets necessary to develop other technical staff
- Effective interpersonal skills in communicating technical matters.

www.engc.org.uk/ceng



Incorporated Engineer

Incorporated Engineers maintain and manage applications of current and developing technology, and may undertake engineering design, development, manufacture, construction and operation.

Incorporated Engineers are able to demonstrate:

- The theoretical knowledge to solve problems in developed technologies using well proven analytical techniques
- Successful application of their knowledge to deliver engineering projects or services using established technologies and methods
- Responsibility for project and financial planning and management together with some responsibility for leading and developing other professional staff
- Effective interpersonal skills in communicating technical matters
- Commitment to professional engineering values.

www.engc.org.uk/ieng



ICT Technician

Professionally registered Information and Communications Technology Technicians work in a variety of environments. These include, but are not limited to: offices, development labs, data and operational centres, field environments, customer premises and manufacturing.

They support a range of functions which utilise ICT solutions, and hardware and software components. Examples of functions include, but are not limited to: design, development, implementation, installation, operation, problem solving and security of ICT applications, products, services and/or infrastructures.

www.engc.org.uk/icttech



How to become professionally registered

The first step to registration is membership of one of the professional engineering institutions licensed to assess candidates, or a Professional Affiliate with the relevant registration agreement. These are listed in this guide and on the Engineering Council's website.

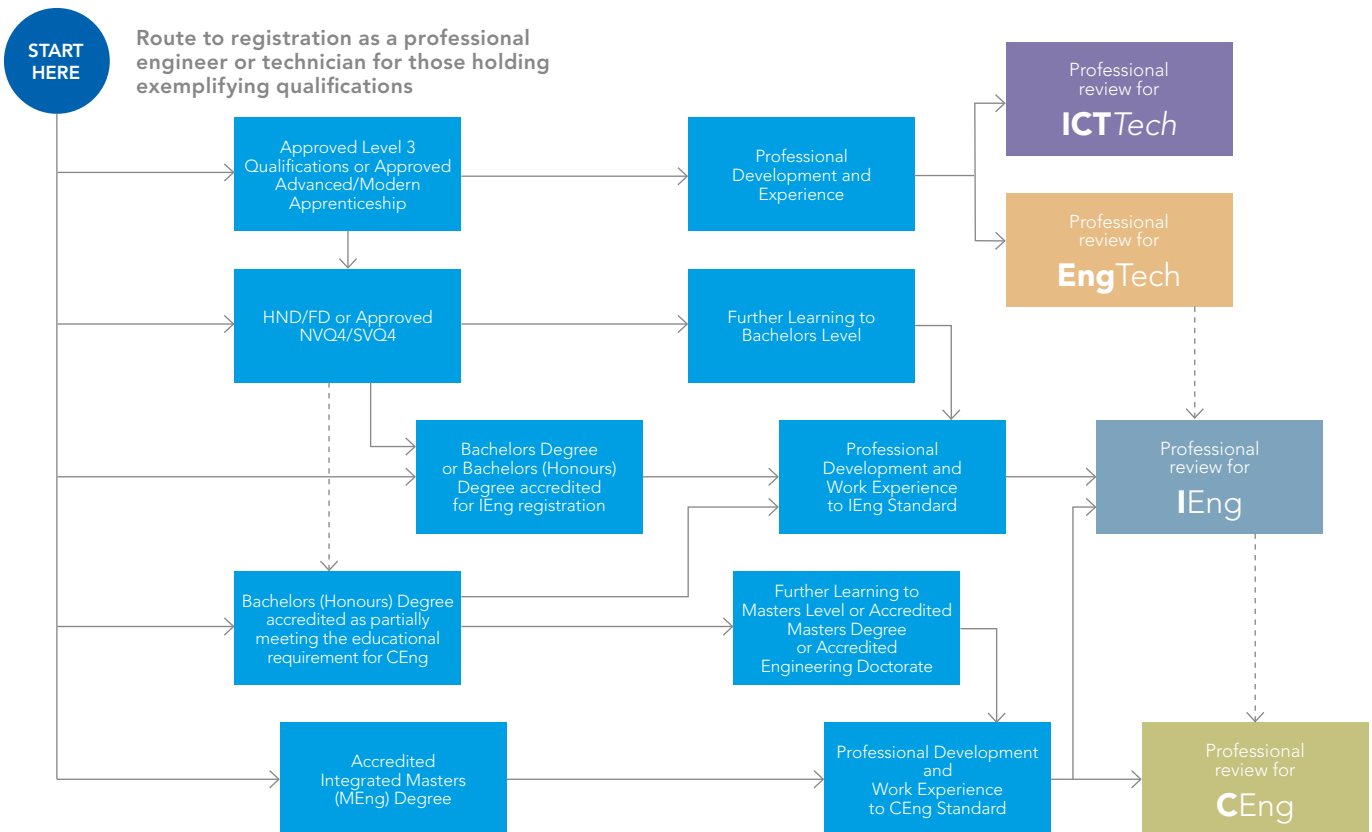
The institution will assess the individual's qualifications, training and experience against UK-SPEC or ICTech requirements and advise if anything further is required. Many institutions can also help with finding a suitable mentor.

The assessment process – known as a professional review – starts with a written application based on the requirements of the institution. A detailed description of the format for this will be provided by the institution. For IEng and CEng, a professional review interview is mandatory. Once the registration criteria have been met, the institution will submit a registration form to the Engineering Council on behalf of the candidate.

Routes to registration: There are two routes to professional registration, depending on whether you hold exemplifying qualifications. For those holding exemplifying qualifications, the flowchart below maps the process. However, many applicants who do not hold such qualifications achieve registered status via an individual assessment route, where an individual assessment of their knowledge and understanding is undertaken by their professional engineering institution.

1. Individual assessment

Individually assessed applicants have a number of ways of demonstrating the required level of knowledge and understanding, including completing appropriate work-based or experiential learning, writing a technical report or taking appropriate further qualifications.



NOTES: 1. This is a summary diagram; for full information see UK-SPEC <http://www.engc.org.uk/ukspec>
 2. The title you apply for will depend on your work experience and your role. 3. In all cases registration is dependent on demonstrating competence and commitment at a professional review. 4. If you do not have the qualifications shown here there are other ways of demonstrating the necessary knowledge and

understanding. 5. For details of qualification levels see <http://www.qaa.ac.uk> and <http://www.scof.org.uk>
 6. It is possible to progress from one registration category to another. 7. The different elements shown here are not necessarily sequential and some may be undertaken concurrently.

The Standards

2. With an accredited degree or approved qualification

Individuals holding an accredited degree may apply for registration via the exemplifying qualifications route. Applicants can check whether their course is accredited and learn more [here](#). If a degree is not accredited, the engineering institution can carry out an individual assessment of the applicant's knowledge and understanding and advise whether further learning is required.

Individuals holding an approved qualification or Apprenticeship may apply for EngTech or ICTTech registration via the exemplifying qualifications route. Applicants can check whether their qualification or Apprenticeship is approved and learn more [here](#). If it is not approved, the engineering institution can carry out an individual assessment of the applicant's knowledge and understanding and advise whether further learning is required.

Eligibility

Professional registration is open to everyone who can:

- Demonstrate both competence to perform professional work to the necessary standards, and commitment to maintain their competence
- Work within professional codes
- Participate actively within the profession.

Academic and vocational qualifications can provide an indication of eligibility for the different categories of registration, because they demonstrate a candidate's level of knowledge and understanding.

However, all round professional competence will be the deciding factor, and there are several other ways in which the required knowledge, understanding and skills can be demonstrated for applicants without the relevant qualifications. These can be found in UK-SPEC for EngTech, IEng or CEng and in the ICTTech Standard for ICTTech. Licensed professional engineering institutions can also advise candidates once they have assessed their qualifications, training and experience.



UK-SPEC and ICTTech Standard

Professional registration with the Engineering Council is based on demonstration of competence and commitment. The UK Standard for Professional Engineering Competence (UK-SPEC) describes the competence and commitment requirements that have to be met for registration as an EngTech, IEng or CEng. The ICTTech Standard provides the same information, but for ICTTech registration. Both Standards include examples of activities that could demonstrate achievement of the professional registration requirements, to enable individuals and employers to find out whether they or their staff can meet the requirements. Academic and vocational qualifications that exemplify the required knowledge and understanding are also listed, however, it should be noted that there are other ways of demonstrating achievement.

UK-SPEC and the ICTTech Standard also contain an explanation of the steps necessary to achieve professional registration; the requirement to maintain and enhance competence once registered; and the obligations to act with integrity and in the public interest that are placed on registrants through their membership of a licensed professional engineering institution.

What is competence?

Competence is the ability to carry out a task to an effective standard. To achieve it requires the right level of knowledge, understanding and skills and a professional attitude. Competence is developed by a combination of formal and informal learning, and training and experience. There are five generic areas of competence and commitment for all registrants, broadly covering:

- Knowledge and understanding
- Design and development of processes, systems, services and products
- Responsibility, management or leadership
- Communication and inter-personal skills
- Professional commitment.

What is commitment?

Registered engineers and technicians demonstrate a personal and professional commitment to society, their profession and the environment. They are required to show that they have adopted a set of values and behaviours that will maintain and enhance the reputation of the profession. To become registered they must provide evidence of:

- Complying with codes of conduct
- Managing and applying safe systems of work
- Undertaking engineering activities in a way that contributes to sustainable development
- Carrying out Continuing Professional Development (CPD) necessary to maintain and enhance competence
- Actively participating within the profession.

Maintaining and enhancing competence

Candidates applying for professional registration must be committed to maintaining and enhancing their competence. They will be required to show evidence that they have taken steps to ensure this, and that they intend to continue to do so in line with the CPD Code for Registrants. This is an important part of recognition as a registered engineer or technician, and it is important that anyone seeking registration recognises that this will entail obligations and an ongoing commitment.

CPD Code for Registrants

Engineering Technicians, Incorporated Engineers, Chartered Engineers and ICT Technicians should take all necessary steps to maintain and enhance their competence through Continuing Professional Development (CPD). In particular they should:

1. Take ownership of their learning and development needs and develop a plan to indicate how they might meet these, in discussion with their employer, as appropriate
2. Undertake a variety of development activities, both in accordance with this plan and in response to other opportunities which may arise
3. Record their CPD activities
4. Reflect upon what they have learned or achieved through their CPD activities and record these reflections
5. Evaluate their CPD activities against any objectives which they have set and record this evaluation
6. Review their learning and development plan regularly following reflection and assessment of future needs
7. Support the learning and development of others through activities such as mentoring, and sharing professional expertise and knowledge.

mycareerpath®

mycareerpath® is an online tool for engineers and technicians to plan, record and evaluate their professional development (PD). Users can record activities and experience that contribute to their PD and build up a body of evidence that can be updated, printed and sent to colleagues or institutions for online review and comments. mycareerpath® is aligned with UK-SPEC for EngTech, IEng, CEng and the ICTTech Standard for ICTTech.

mycareerpath® is managed by the Engineering Council, and many licensed professional engineering institutions and Professional Affiliates are currently licensed to offer the system to their members.

For more information please visit www.engc.org.uk/mycareerpath

Guidelines for Institution Codes of Conduct

All registrants are expected to observe the requirements of the Code of Conduct of the institution they have joined.

The Code of Conduct of each licensed professional engineering institution shall place a personal obligation on its members to act with integrity and in the public interest. It should be worded in such a way as to encourage members to act in accordance with the *Statement of Ethical Principles* published by the Royal Academy of Engineering and the Engineering Council.

Institutions shall ensure that they have appropriate disciplinary processes that comply with this Engineering Council Guidance in place to deal with breaches of their Codes of Conduct.

Specifically, Codes of Conduct should oblige members to:

1. Act with due skill, care and diligence and with proper regard for professional standards
2. Prevent avoidable danger to health or safety
3. Prevent avoidable risk to both physical and cyber security
4. Act in accordance with the principles of sustainability, and prevent avoidable adverse impact on the environment and society
5. Maintain and enhance their competence, undertake only professional tasks for which they are competent, and disclose relevant limitations of competence
6. Accept appropriate responsibility for work carried out under their supervision
7. Treat all persons fairly and with respect
8. Encourage others to advance their learning and competence
9. Avoid where possible real or perceived conflict of interest, and advise affected parties when such conflicts arise
10. Observe the proper duties of confidentiality owed to appropriate parties
11. Reject bribery and all forms of corrupt behaviour, and make positive efforts to ensure others do likewise
12. Raise a concern about a danger, risk, malpractice or wrongdoing which affects others ('blow the whistle'), and support a colleague or any other person to whom you have a duty of care who in good faith raises any such concern
13. Assess and manage relevant risks and communicate these appropriately
14. Assess relevant liability, and if appropriate hold professional indemnity insurance
15. Notify the Institution if convicted of a criminal offence or upon becoming bankrupt or disqualified as a Company Director
16. Notify the Institution of any significant violation of the Institution's Code of Conduct by another member.

Accreditation and approval

Accreditation of degrees



Accreditation offers a mark of assurance that a degree programme will provide a student with some or all of the underpinning knowledge, understanding and skills that will set them in good stead for eventual professional registration. The standards in UK-SPEC have been adopted by the UK Quality Assurance Agency for Higher Education (HE) as the subject benchmark statement for engineering.

Degree programmes may be accredited by one or more of the 22 professional engineering institutions licensed to do so by the Engineering Council. Importantly, engineering employers as well as academics are involved in the setting of standards, in advising on programme developments, in reviewing degrees and in the decision-making process about whether to confer accredited degree status. Accredited status confers market advantage to Higher Education Institutions (HEIs) and provides a structured and rigorous mechanism ensuring the quality and relevance of degree programmes, and the opportunity for licensed professional engineering institutions and HEIs to work together for mutual benefit and public good.

For more information, or to see which degree programmes partially or fully satisfy the education requirement for IEng and CEng registration, please visit: www.engc.org.uk/courses

Approval of qualifications and programmes



Other non-degree qualifications and programmes may be approved by licensed professional engineering institutions rather than accredited. These are primarily vocational qualifications, for instance NVQs, or programmes such as Advanced Apprenticeships that are approved for the purposes of EngTech, IEng or ICTTech registration.

The approval process looks at the overall design, coverage and assessment strategy and seeks evidence that satisfactory quality assurance arrangements are in place.

For further information and to see which qualifications and programmes have been approved as contributing towards EngTech, IEng or ICTTech registration please visit: www.engc.org.uk/techdb

Work-based degree programmes leading to registration

Flexible, work-based Bachelors and Masters degrees in Professional Engineering, leading to IEng or CEng registration, are offered by a number of universities, supported by the licensed professional engineering institutions.

The individually tailored programmes are designed around UK-SPEC and integrate learning in the workplace with supervised work-based professional development. This enables individuals to gain the necessary academic qualifications and, with the support of a mentor, to develop the required competence for professional registration without needing to leave employment.

The framework for this pathway was developed as part of a government funded initiative 'Gateways to the Professions'.

Full details and a list of universities currently offering the programmes can be found at: www.engc.org.uk/engineeringgateways

Toolkit for universities

A toolkit for universities interested in adopting the Engineering Gateways model has been developed with funding from the National HE STEM programme's workforce development programme.

The toolkit is available by clicking on the toolkit image on www.engc.org.uk/engineeringgateways

Registration fees

2017 Annual Registration Fees

| Title | Final Stage | Interim Stage | Retired/ Hardship (Final Stage Only)* |
|---------|-------------|---------------|---|
| EngTech | £18.40 | £13.50 | £8.20 |
| IEng | £32.00 | £13.50 | £14.30 |
| CEng | £37.90 | £13.50 | £17.10 |
| ICTech | £18.40 | £13.50 | £8.20 |

*Criteria for the payment of reduced fees are at the discretion of the registrant's professional engineering institution

2017 Registration Entry Fee

| Title | Final Stage | Interim Stage |
|---------|-------------|---------------|
| EngTech | £17.00 | £10.10 |
| IEng | £41.60 | £10.10 |
| CEng | £49.20 | £10.10 |
| ICTech | £17.00 | £10.10 |

NB. The registration entry fee includes the first year's registration fee.

How the fees are used

Initially the fees are paid to the institution through which the individual is registered. The institution then passes them on to EngineeringUK, who in turn make a grant to the Engineering Council to keep the standards under review, operate the Register and quality assure the licensed institutions. The remaining sum is used by EngineeringUK to promote the engineering profession. This includes producing the EngineeringUK report, supporting the Tomorrow's Engineers programme and The Big Bang UK Young Scientists & Engineers Fair.

Lapsed registration

A registrant may be reinstated to the Register, but may be required to pay an administrative fee and/or any outstanding fees or even undertake a Professional Review depending on how long the registration has lapsed. For further details on reinstatements and the process for readmission to the Register, please contact your institution.

International recognition

Professional registration with the Engineering Council is open to anyone who is able to demonstrate they have attained the relevant competences, regardless of nationality or location.

The main focus of the organisation's international activity falls in two areas:

- Ensuring that the standards set in the UK are globally recognised
- Facilitating the international mobility of engineering professionals.

To do this, the Engineering Council works with numerous national, regional and international engineering organisations on a number of specific mutual recognition agreements and European laws which support acceptance of registration overseas.

The Engineering Council is a founder member of the International Engineering Alliance (IEA), an umbrella group that oversees six international agreements relating to the recognition of standards for the accreditation of engineering education and professional engineering competence.

This includes, acting as the UK signatory to three international education accords. These agreements provide signatory bodies with a mechanism for mutual recognition of processes for the accreditation of engineering education programmes, such as degree courses and Apprenticeships, and can lead to exemption from the education requirement for registration in each of the signatory countries.

Within Europe, the Engineering Council is the UK National Member of the European Federation of National Engineering Associations (FEANI), which aims to facilitate the mutual recognition of engineering qualifications in Europe and to strengthen the position, role and responsibility of engineers in society. The Engineering Council is also a founder member of the European Network for Accreditation of Engineering Education (ENAE), which promotes mutual recognition of engineering education programmes accredited to a European framework.

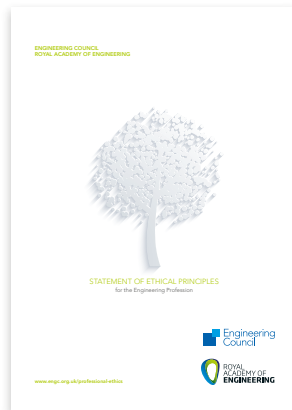
Further information can be found in the [international activity section](#) on the Engineering Council website.

Guidance for professional engineers and technicians

The Engineering Council has produced guidance material for professional engineers and technicians on their role and responsibilities in dealing with sustainability, risk, whistleblowing and ethics. Each publication is available online and, in limited numbers, in print. They are all fully compatible with [UK-SPEC](#), and include principles to guide and motivate. Wallet cards are also available that have the guidance principles on risk printed on one side and principles on sustainability printed on the other. If you would like some, please contact us on marketing@engc.org.uk

Ethical principles

Developed in collaboration with the Royal Academy of Engineering and a number of licensed professional engineering institutions, the [Statement of Ethical Principles](#) includes four fundamental principles that should guide an engineer or technician in achieving the high ideals of professional life. These express the beliefs and values of the profession, to which the Engineering Council believes all professional engineers, technicians and related bodies should subscribe.



Risk

Risk is inherent in the activities undertaken by engineering professionals, and members of the profession have a significant role to play in managing and limiting risk. All professional engineers and technicians are under a personal obligation to maintain and enhance their competence in their area of practice. The generic, top level and profession-wide [Guidance on Risk](#) establishes principles to help professional engineers and technicians ensure that risk is an important consideration in all their engineering activity. The six principles help to guide in identifying, assessing, managing and communicating about risk.



Security

Security can be defined as the state of relative freedom from threat or harm caused by deliberate, unwanted, hostile or malicious acts. It operates on a number of levels ranging from national security issues to countering crime. [Guidance of security](#) sets out six principles to guide engineers and technicians in identifying, assessing, managing and communicating issues about security.



Licensed professional engineering institutions

The Engineering Council's Royal Charter empowers it to give formal recognition to those engineering related professional bodies which satisfy criteria set down in its Bye-laws.

Whilst there are numerous technical provisions to be assessed, the principal requirements are that a licensed engineering institution is deemed to have sufficient experience, procedures and resources to undertake the following tasks:

- Assess the competence and commitment of candidates for registration
- Monitor the continuing professional development of registrants
- Monitor the conduct of registrants.

Professional engineering institutions may also be licensed to accredit academic programmes and professional development schemes.

Benefits of membership

There are many benefits of membership with a professional licensed institution, including:

- Recognition of the member's professional status, which may include post-nominals
- Support and guidance with ongoing professional development, including registration
- Technical regional events, seminars, conferences, webinars often at a special rate
- Monthly journals and other technical publications
- Access to technical library
- Careers advice
- Health and legal advice
- Specialist interest groups
- Networking opportunities
- Access to online resources in 'members only' areas
- Awards and prizes.

Membership benefits can vary between institutions. For a full list of what each individual institution offers please visit the relevant website.

Please note that all registration numbers on the following pages are correct as at 31 December 2016. They represent fee-paying, final stage registered members only.

Sustainability

Professional engineers and technicians are increasingly required to play a leadership role in sustainable development, overcoming global challenges such as depletion of resources, environmental pollution, rapid population growth and damage to ecosystems. [Guidance on Sustainability](#) describes the role of engineers and technicians in relation to sustainability. Six principles are provided to help professional engineers and technicians meet their obligations as they seek to achieve sustainability.



Whistleblowing

Whistleblowing is defined by the UK Whistleblowing Commission as *'the raising of a concern, either within the workplace or externally, about a danger, risk, malpractice or wrongdoing which affects others'*. [Guidance on Whistleblowing](#) provides support to engineers and technicians when confronted by a potential whistleblowing situation. It sets out the processes that engineers and technicians should follow in raising such a concern, and where to get advice.



Professional engineering institutions licensed to award professional registration

Data in the table is subject to change or addition, please refer to the Engineering Council's website for the most up to date information.

Although Professional Affiliates are not granted licences to award professional registration, they may register their members through an agreement with one of the licensed professional engineering institutions listed below.

| Institution | Registration Category | | | | |
|---|-----------------------|---------|------|------|--------|
| | page | EngTech | IEng | CEng | ICTech |
| BCS, The Chartered Institute for IT (BCS) | 29 | | ✓▲★ | ✓▲★ | |
| British Institute of Non-Destructive Testing (BINDT) | 30 | ✓● | ✓ | ✓ | |
| Chartered Institution of Building Services Engineers (CIBSE) | 31 | ✓● | ✓▲★ | ✓▲★ | |
| Chartered Institution of Highways & Transportation (CIHT) | 32 | ✓● | ✓▲ | ✓▲ | |
| Chartered Institute of Plumbing and Heating Engineering (CIPHE) | 33 | ✓● | ✓ | ✓ | |
| Chartered Institution of Water and Environmental Management (CIWEM) | 34 | ✓ | ✓ | ✓ | |
| Energy Institute (EI) | 35 | ✓● | ✓▲★ | ✓▲★ | |
| Institution of Agricultural Engineers (IAgrE) | 36 | ✓● | ✓▲ | ✓▲ | |
| Institution of Civil Engineers (ICE) | 37 | ✓● | ✓▲★ | ✓▲★ | |
| Institution of Chemical Engineers (ICHEM) | 38 | ✓● | ✓▲ | ✓▲ | |
| Institute of Cast Metals Engineers (ICME) | 39 | ✓● | ✓ | ✓ | |
| Institution of Engineering Designers (IED) | 40 | ✓● | ✓▲ | ✓▲ | |
| Institution of Engineering and Technology (IET) | 41 | ✓● | ✓▲★ | ✓▲★ | ✓● |
| Institution of Fire Engineers (IFE) | 42 | ✓● | ✓▲★ | ✓▲★ | |
| Institution of Gas Engineers and Managers (IGEM) | 43 | ✓● | ✓▲★ | ✓▲★ | |
| Institute of Highway Engineers (IHE) | 44 | ✓● | ✓▲★ | ✓▲★ | |
| Institute of Healthcare Engineering and Estate Management (IHEEM) | 45 | ✓● | ✓ | ✓ | |

For more information on Professional Affiliates [click here](#) or visit the Engineering Council's website for further details.

- ✓ = institute can assess candidates for registration
- ▲ = institute can accredit academic course(s)
- = institute can approve qualifications and programmes
- ★ = institute can accredit/approve professional development schemes

| Institution | Registration Category | | | | |
|---|-----------------------|---------|------|------|--------|
| | page | EngTech | IEng | CEng | ICTech |
| Institution of Lighting Professionals (ILP) | 46 | ✓● | ✓ | ✓ | |
| Institute of Marine Engineering, Science & Technology (IMarEST) | 47 | ✓● | ✓▲★ | ✓▲★ | |
| Institution of Mechanical Engineers (IMechE) | 48 | ✓● | ✓▲★ | ✓▲★ | |
| Institute of Measurement and Control (InstMC) | 49 | ✓● | ✓▲★ | ✓▲★ | |
| Institution of Royal Engineers (InstRE) | 50 | ✓● | ✓ | ✓ | |
| Institute of Acoustics (IOA) | 51 | | ✓ | ✓ | |
| Institute of Materials, Minerals and Mining (IOM3) | 52 | ✓● | ✓▲★ | ✓▲★ | |
| Institute of Physics (IOP) | 53 | | | ✓★ | |
| Institute of Physics and Engineering in Medicine (IPEM) | 54 | ✓● | ✓▲★ | ✓▲★ | |
| Institution of Railway Signal Engineers (IRSE) | 55 | ✓ | ✓ | ✓ | |
| Institution of Structural Engineers (IStructE) | 56 | ✓● | ✓▲ | ✓▲ | |
| Institute of Water | 57 | ✓● | ✓ | ✓ | |
| Nuclear Institute (NI) | 58 | ✓● | ✓ | ✓ | |
| Royal Aeronautical Society (RAeS) | 59 | ✓● | ✓▲★ | ✓▲★ | |
| Royal Institution of Naval Architects (RINA) | 60 | ✓ | ✓▲★ | ✓▲★ | |
| Society of Environmental Engineers (SEE) | 61 | ✓ | ✓ | ✓ | |
| Society of Operations Engineers (SOE) | 62 | ✓● | ✓▲★ | ✓ | |
| The Welding Institute | 63 | ✓● | ✓▲ | ✓▲ | |

Professional Engineering Institutions - the first step to becoming professionally registered

The first step to becoming professionally registered with the Engineering Council as an EngTech, IEng, CEng or ICTech is membership of a licensed professional engineering institution. The institution will act as the awarding body for your registration.

When choosing which institution to contact it is best to join one closest to the discipline of engineering you work in. They will be best placed to assess your competence for professional registration. If you find that there are two or three suitable institutions, you might wish to join more than one, or contact all those suitable to choose which best meets your needs.



The Chartered Institute for IT (BCS)

Established in 1957. Incorporated by Royal Charter in 1984.

Sector: IT

About: BCS, The Chartered Institute for IT, is a trusted, powerful and positive reference point for the IT sector within wider society. The Institute is committed to making IT good for society by giving IT professionals a voice on the important issues and empowering them to drive a positive change in the industry. We do this by promoting excellence, leadership and communities.

Members: Members include: IT practitioners; businesses; academics; and students.

Approximate number of members: 75,000

| | | | |
|---|---------------------|------|-------|
| 📌 | Licensed to award: | IEng | CEng |
| | Registered members: | 170 | 5,293 |

Grades of Membership: Student; Associate (AMBACS); Professional (MBCS); Fellow (FBCS).

Specialist interest groups: Over 50 specialist groups.

Member Benefits

Structure: 45 UK and international branches.

Contact details:

Institute Group Chief Executive: Paul Fletcher FBCS

First Floor, Block D, North Star House, North Star Avenue, Swindon SN2 1FA

+44 (0)1793 417 424 customerservice@hq.bcs.org.uk
www.bcs.org

Companies House No: RC000724 Registered Charity number: 292786

British Institute of Non-Destructive Testing (BINDT)

First established in 1954 as Society of Non-Destructive Testing. Incorporated in 1969.

Sector: Non-destructive testing and condition monitoring

About: BINDT is the professional institute for all those engaged in non-destructive testing (NDT) and condition monitoring. It is concerned with the education, training and professional development of people and the advancement of the science and practice of the field of NDT.

There are many different forms of NDT, but the principle methods are: radiography; ultrasonic; eddy current; leak testing; acoustic emission; liquid penetrant; and magnetic particle. NDT is applied to all engineering materials and products, including metallic, plastic and composite materials in the cast, fabricated and wrought conditions.

Mission: To promote the advancement of the science and practice of non-destructive testing, condition monitoring, diagnostic engineering and all other associated materials and quality testing disciplines.

Members: Members are those who work in or have an interest in NDT, condition monitoring, diagnostic engineering, or materials and quality testing in general.

Approximate number of members: 1,700

| Licensed to award: | EngTech | IEng | CEng |
|---------------------|---------|------|------|
| Registered members: | 373 | 210 | 113 |

Grades of Membership: Corporate; Affiliate; Associate Member (AMInstNDT); Member (MInstNDT); Fellow (FInstNDT).

Specialist interest groups: Numerous, including sector-specific groups such as 'aerospace' and 'trade' (supply chain) and technical discipline-specific groups, for example: thermography; vibration analysis; guided wave testing; and air tightness testing.

Member Benefits

Structure: Nine branches in the UK; one branch in North America.

Contact details:

Chief Executive Officer: Cameron Sinclair BSc CEng MInstNDT
Midsummer House, Riverside Way, Bedford Road,
Northampton NN1 5NX

+44 (0)1604 438 300 info@bindt.org
www.bindt.org

Companies House No: 969051 Registered Charity number: 260666

Chartered Institution of Building Services Engineers (CIBSE)

First established in 1897 as Institution of Heating and Ventilation Engineers. Merged with Illuminating Engineering Society in 1976. Incorporated by Royal Charter in 1976.

Sector: Building services engineering

About: CIBSE is the standard setter and authority for building services engineering. It publishes guidance and codes which are internationally recognised as authoritative, and sets the criteria for best practice in the profession. The Institution speaks for the profession and so is consulted by government on matters relating to construction, engineering and sustainability. It is represented on major bodies and organisations which govern construction and engineering occupations in the UK, Europe and worldwide.

Mission: To support the science, art and practice of building services engineering, by providing our members and the public with first class information and education services and promoting the spirit of fellowship which guides our work.

Members: Members include engineers and technicians working in the field of heating; ventilating; electrical wiring; acoustics; telecommunications; security; fire; safety; internal transportation; public health; and facilities management. In addition, individuals may work on the design, manufacture, installation or maintenance of systems.

Approximate number of members: 21,000

Registration agreements with other institutions:

Institute of Refrigeration (IoR).

| Licensed to award: | EngTech | IEng | CEng |
|----------------------------|---------|-------|-------|
| Registered members: | 713 | 1,149 | 6,101 |
| Registered via agreements: | 3 | 2 | 2 |

Grades of Membership: Companion; Affiliate; Student; Graduate; Licentiate (LCIBSE); Associate (ACIBSE); Member (MCIBSE); Fellow (FCIBSE).

Societies: The Society of Light and Lighting (SLL); the Society of Public Health Engineers (SoPHE); the Society of Façade Engineering (SFE); and the Institute of Local Exhaust Ventilation Engineers (ILEVE).

Member Benefits

Structure: 16 regions in the UK; four overseas in Australia and New Zealand, Hong Kong, Republic of Ireland and the United Arab Emirates.

Contact details:

Chief Executive: EUR ING Stephen Matthews CEng FCIBSE FIMechE
222 Balham High Road, London SW12 9BS

+44 (0)20 8675 5211 membership@cibse.org
www.cibse.org

Registered Charity number: 278104

Chartered Institution of Highways & Transportation (CIHT)



Established in 1930. Incorporated by Royal Charter in 2009.

Sector: Highway, transport and traffic engineering

About: CIHT is a charity, learned society and membership body. The Institution is the leading voice for the transport infrastructure profession and a prime source of advice for national and local government and other strategic stakeholders when they are seeking technical expertise and knowledge to guide future policy and investment.

Mission: To be committed to excellence; support our members and advance their professional standing; inspire lifelong learning; generate and share knowledge and demonstrate transport infrastructure's contribution to a prosperous economy and a healthy and inclusive society.

Vision: World-class transportation infrastructure and services.

Members: CIHT represents and qualifies professionals who plan, design, build, manage and operate transport and infrastructure, embracing all aspects of transport infrastructure while continuing to value its roots in highway engineering. Members work for transport consultancies, contractors, local authorities, and in research and academia.

Approximate number of members: 14,000

| Licensed to award: | EngTech | IEng | CEng |
|---------------------|---------|------|------|
| Registered members: | 47 | 232 | 649 |

Grades of Membership: Student; Apprentice; Graduate (GradCIHT); Associate (AMCIHT); Member (MCIHT); Fellow (FCIHT).

Specialist interest groups: A number of specialist areas are represented through CIHT's technical panels. The Society of Road Safety Auditors (SoRSA) is a large specialist interest group with an active membership of around 300.

Member Benefits

Structure: 12 UK regions; three international regions.

Contact details:

Chief Executive: Sue Percy BSc MA MRTPI

119 Britannia Walk, London N1 7JE

+44 (0)20 7336 1555 info@ciht.org.uk
www.ciht.org.uk

Companies House No: RC000835

Registered Charity number: 1136896/SC040973

Chartered Institute of Plumbing and Heating Engineering (CIPHE)



First established in 1906 as Institute of Plumbers.

Incorporated by Royal Charter in 2008.

Sector: Plumbing and heating

About: CIPHE is the UK's professional body for people who work in the plumbing and heating industry. The Institute's prime objective is to improve the science, practice and principles of plumbing and heating engineering for the public interest.

Mission: To operate as an independent technical and professional focal point, and be a catalyst for the plumbing and heating industry by providing technical and professional standards, expertise, education and technical innovation to the operatives within its scope.

Vision: To create an environment in which the public will receive the benefit of a protected environment and enhanced sustainability together with improved safety and health through the provision of correctly installed, commissioned, maintained and decommissioned plumbing and heating systems.

Members: Members include: plumbers; qualified owner managers; sole proprietors; designers; lecturers; inspectors; and consultants. The Institute has a category for students who are studying for an accredited qualification in plumbing or heating engineering.

Approximate number of members: 7,500

| Licensed to award: | EngTech | IEng | CEng |
|---------------------|---------|------|------|
| Registered members: | 1010 | 109 | - |

Grades of Membership: Trainee; Affiliate; Companion (Comp CIPHE); Associate (ACIPHE); Member (MCIPHE); Fellow (FCIPHE).

Specialist interest groups: Numerous, including: education and training; renewable energy; safe water.

Member Benefits

Structure: Over 20 branch network groups in the UK; a branch in Hong Kong.

Contact details:

Chief Executive: Kevin Wellman EngTech FCIPE RP MCGI FCMi MIOd FInstLM

64 Station Lane, Hornchurch, Essex RM12 6NB

+44 (0)1708 472 791 info@ciphe.org.uk
www.ciphe.org.uk

Companies House No: RC000822 Registered Charity number: 1124517

Chartered Institution of Water and Environmental Management (CIWEM)

First established in 1987, a merger of Institution of Public Health Engineers, Institution of Water Engineers and Institute of Water Pollution Control. Incorporated by Royal Charter in 1994.

Sector: Water and environmental management

About: CIWEM is a professional body for the water and environment sector. It represents and supports a community of thousands of members globally, dedicated to improving water and environmental management and associated social and cultural issues. Through its professional expertise CIWEM provides valuable advice on policy and practice, giving independent guidance for government, academia, the media and the public.

As an independent charity CIWEM champions professional standards, impartiality and the use of scientific evidence in the management of the environment.

Members: Members are employed throughout the environment sector, including: senior management; engineering and scientific posts in local authorities; water companies; regulatory bodies; consultants; contractors; government departments; universities; environmental and conservation organisations; and the private sector of industry.

Approximate number of members: 9,000

| Licensed to award: | EngTech | IEng | CEng |
|---------------------|---------|------|------|
| Registered members: | 13 | 230 | 843 |

Grades of Membership: Student; Graduate; Technician member (TechCIWEM); Associate (ACIWEM); Member (MCIWEM); Chartered Member (C.WEM); Fellow (FCIWEM).

Specialist interest groups: Urban Drainage Group; Arts and the Environment Network; Faiths and the Environment Network; Contaminated Land Network; Climate Change Network; Energy Network.

Member Benefits

Structure: 12 branches in the UK; three international branches.

Contact details:

Chief Executive: Terry Fuller CEng MCIWEM C.WEM

106-109 Saffron Hill, London EC1N 8QS

+44 (0)20 7831 3110 membership@ciwem.org
www.ciwem.org

Companies House No: 2018985

Registered Charity number: 1043409/SC038212

Energy Institute (EI)

First established in 1926 as the Institute of Fuel.
Incorporated by Royal Charter in 2003.

Sector: Energy

About: EI is the leading chartered professional membership body for the energy industry, supporting over 23,000 individuals working in or studying energy and 200 companies worldwide. The EI provides learning and networking opportunities to support professional development, as well as professional recognition and technical and scientific knowledge resources on energy in all its forms and applications.

Mission: To develop and disseminate knowledge, skills and good practice towards a safe, secure and sustainable energy system. In fulfilling this mission, the EI addresses the depth and breadth of the energy sector, from fuels and fuel distribution to health and safety, sustainability and the environment. It also informs policy by providing a platform for debate and scientifically-sound information on energy issues.

Members: Members encompass the full range of energy industry sectors including: oil; gas; solid fuel; renewables; and nuclear. EI is uniquely placed to offer a natural home to those employed in any part of the energy sector and in any role.

Approximate number of members: Over 23,000

| Licensed to award: | EngTech | IEng | CEng |
|---------------------|---------|------|-------|
| Registered members: | 22 | 143 | 1,849 |

Grades of Membership: Student; Graduate (GradEI); Affiliate; Technician Member (TMEI); Member (MEI); Fellow (FEI); Honorary Fellow (HonFEI).

Specialist interest groups: Several, including: energy management; energy policy; future fuels and transport; information for energy; nuclear; and skills.

Member Benefits

Structure: 13 branches in the UK; six branches overseas.

Contact details:

Chief Executive: Louise Kingham OBE FEI

61 New Cavendish Street, London W1G 7AR

+44 (0)20 7467 7100 info@energyinst.org
www.energyinst.org

Companies House No: RC000783 Registered Charity number: 1097899

Institution of Agricultural Engineers (IAgrE)

Established in 1938. Incorporated in 1960.



Sector: Agricultural and landbased industries

Book icon: **About:** IAgrE is the professional body for engineers, scientists, technologists and managers in agricultural and allied landbased industries including: forestry, food engineering and technology, amenity, renewable energy, horticulture and the environment.

Mission: To achieve the vision through being an effective provider of services that enhance the professional competence and status of engineers, technicians, technologists and scientists operating in the landbased sector.

Vision: To be seen increasingly as the professional body of choice for engineers, scientists, technologists and managers working in agricultural and allied landbased industries, including: forestry; food engineering and technology; amenity; renewable energy; horticulture and the environment.

Members: Members are engineers, scientists, technologists and managers working in agricultural and allied industries including forestry, food processing and agro-chemicals. Their activities cover a broad technical and administrative spectrum in engineering research; design; manufacture and testing; marketing; teaching; training; consultancy; contracting and farming.

Approximate number of members: 3,000

| Licensed to award: | EngTech | IEng | CEng |
|---------------------|---------|------|------|
| Registered members: | 311 | 160 | 183 |

Pin icon: **Grades of Membership:** Student, Pre-professional; Associate (AIAGrE); Associate Member (AMIAGrE); Member (MIAGrE); Fellow (FIAGrE).

Specialist interest groups: Thirteen, including: agricultural and livestock engineering; amenity and sports engineering; design, research and innovation; environment, soil and water; health and safety; horticultural engineering; leadership and management; pioneering technology; post-harvest, food engineering and technology; power and machinery; precision farming; robotics and auto; technical support, distribution and sales and training and education.

Member Benefits

People icon: **Structure:** 13 branches in the UK; international presence.

People icon: Contact details:

Chief Executive: Alastair Taylor IEng CEnv MIAgrE
The Bullock Building (Bldg 53), University Way, Cranfield,
Bedford MK43 0GH

+44 (0)1234 750876 membership@iagre.org
www.iagre.org

Companies House No: 648041 Registered Charity number: 257303

Institution of Civil Engineers (ICE)

Established in 1818. Incorporated by Royal Charter in 1828.



Sector: Civil engineering and construction

Book icon: **About:** ICE is one of the world's leading civil engineering institutions. It supports civil engineers and technicians by awarding internationally recognised professional qualifications, ensuring they work to high standards and helping them to develop their careers.

ICE's work also includes many other activities, from inspiring school students about civil engineering to influencing government investment in infrastructure. It is a leading source of professional expertise in transport; water supply and treatment; flood management; waste and energy.

Mission: To qualify civil engineering professionals and give them the tools they need to continue to develop; to help the industry learn more and share our knowledge so we can maintain the natural and built environment; and to promote the contribution that civil engineers make to society worldwide. ICE is an organisation that is recognised and operates globally.

Vision: To place civil engineering at the heart of society, delivering sustainable development through knowledge, skills and professional expertise.

Members: ICE's members are very diverse. They are spread across the world, with almost a quarter outside the UK. They have a variety of backgrounds, are at different stages of their careers and work in a wide range of sectors.

Approximate number of members: 91,000

Registration agreements with other institutions:
Chartered Institution of Civil Engineering Surveyors (ICES).

| Licensed to award: | EngTech | IEng | CEng |
|----------------------------|---------|-------|--------|
| Registered members: | 1,443 | 2,723 | 35,741 |
| Registered via agreements: | - | - | 9 |

Pin icon: **Grades of Membership:** Student; Graduate; Technician Member (MICE); Associate Member (AMICE); Member (MICE); Fellow (FICE); Affiliate; Companion.

Specialist interest groups: Numerous regional groups, please see website for details.

Member Benefits

People icon: **Structure:** 12 UK regions and presence in over 160 countries.

People icon: Contact details:

Chief Executive: Nick Baveystock MA CEng FlnstRE FICE FCEMI
One Great George Street, Westminster, London SW1P 3AA

+44 (0)20 7222 7722 membership@ice.org.uk
www.ice.org.uk

Companies House No: RC000262 Registered Charity number: 210252

Institution of Chemical Engineers (IChemE)

Established in 1922. Incorporated by Royal Charter in 1957.

Sector: Engineering

About: IChemE is the global professional membership organisation for people with relevant experience or an interest in chemical engineering.

Mission: Founded in 1922 as a professional institution for chemical and process engineers, IChemE has grown to its current status of over 44,000 members across 120 countries.

Vision: To advance chemical engineering worldwide by operating an effective, efficient and responsive organisation for its members. It provides leadership and demonstrates good practice for the chemical engineering profession whilst complying with its obligations as a charitable body.

Members: Members are professionals working in all aspects of the process industry and academia, operating in diverse sectors including process designers, biotechnology to water supply, food processing, fine chemicals, to nuclear and carbon capture and storage, with job titles from process technologist through to CEO. Membership includes process engineers, specialists in research, design, safety and project management, not to mention operators, technicians and apprentices.

Approximate number of members: 44,000

| Licensed to award: | EngTech | IEng | CEng |
|---------------------|---------|------|--------|
| Registered members: | 20 | 47 | 11,313 |

Grades of Membership: Student Member; Technician Member (TICChemE); Affiliate Member; Associate Member (AMICChemE); Associate Member (Process Safety) (AMICChemE); Chartered Member (MICChemE); Professional Process Safety Engineer (MICChemE); Associate Fellow (AFICChemE); Fellow (FICChemE).

Specialist interest groups: 20 including: food and drink; oil and natural gas; pharma; safety and loss prevention; sustainability; and water.

Member Benefits

Structure: Headquarters in the UK with offices in Australia, Malaysia, New Zealand and Singapore, and staff, ambassadors and member groups in countries all over the world.

Contact details:

Chief Executive: Jon Prichard CEng FICE FInstRE
Railway Terrace, Rugby CV21 3HQ

+44 (0)1788 578214 customerservices@icHEME.org
www.icHEME.org

Companies House No: RC000250

Registered Charity number: 214379/SC039661

Institute of Cast Metals Engineers (ICME)

First established in 1904 as the British Foundrymen's Association. Incorporated by Royal Charter in 1921.

Sector: Foundry and castings industry

About: ICME exists to support the education of individuals in the castings industry and to provide technical information and professional development opportunities to its members. Following the establishment of the *Foundry Trade Journal* in 1902, a small group of foundry men met in Birmingham and formed the British Foundrymen's Association with the aim of applying 'science to the work of the foundry'. The earliest branch, known as the Lancashire Branch, was founded in 1905 and was followed by other regional branches. In October 2000 the name was changed to the Institute of Cast Metals Engineers.

Mission: To bring together people from all sectors and levels, to offer help and advice, technical support and professional development opportunities, helping members make the most of their careers in the castings industry.

Members: Members are drawn from the international castings industry and include: foundrymen; die casters; castings engineers; methods engineers; pattern and mould makers; metallurgists and researchers; and those who supply or are customers to the industry.

Approximate number of members: 800

| Licensed to award: | EngTech | IEng | CEng |
|---------------------|---------|------|------|
| Registered members: | 27 | 65 | 56 |

Grades of Membership: Student Member; Member (MICME); Professional Member (Prof MICME); Fellow (FICME).

Member Benefits

Structure: Seven branches in the UK.

Contact details:

NMC, 47 Birmingham Road, West Bromwich,
West Midlands B70 6PY

+44 (0)121 601 6979 info@icme.org.uk
www.icme.org.uk

Companies House No: RC000244 Registered Charity number: 250380

Institution of Engineering Designers (IED)



Established in 1945. Incorporated by Royal Charter in 2012.

Sector: Engineering design, technological product design and Computer Aided Design

Book icon: **About:** IED is the only organisation in the UK to represent those working across all fields of engineering and product design.

Mission: To promote the science, technology and education of engineering design and product design in widely diverse fields, including mechanical; electrical; electronics; civil; aeronautical and automotive engineering; IT and computing; mechatronics; design management; design consultancy and design education.

Vision: To support and inspire our members to achieve professional recognition.

Members: Membership is open to all those who study, practice, manage or educate in engineering, technological product design and CAD. Members come from a diverse range of backgrounds and disciplines, but all have an interest and expertise in design.

Approximate number of members: 5,000

| Licensed to award: | EngTech | IEng | CEng |
|---------------------|---------|------|------|
| Registered members: | 93 | 781 | 371 |

Map icon: **Grades of Membership:** Student (StudIED); Member (MIED); Fellow (FIED).

Specialist interest groups: Health and well-being; design processes; sustainability.

Member Benefits

Network icon: **Structure:** Nine UK branches; three overseas.

People icon: **Contact details:**
 Chief Executive: Libby Meyrick BSc (Hons) FRSA
 Courtleigh, Westbury Leigh, Westbury, Wiltshire BA13 3TA
+44 (0)1373 822 801 ied@ied.org.uk
www.ied.org.uk

Companies House No: RC000851 Registered Charity number: 1145678

Institution of Engineering and Technology (IET)



First established in 1871 as the Society of Telegraph Engineers. Incorporated by Royal Charter in 1921. Merger in 2006 of Institution of Electrical Engineers and Institution of Incorporated Engineers.

Sector: Engineering and technology sectors

Book icon: **About:** IET is a world-leading professional organisation sharing and advancing knowledge to promote science, engineering and technology across the world. It provides a Professional Home for Life@ for engineers and technicians and is a trusted source of essential engineering intelligence.

The Institution was formed in 2006 by a merger of the Institution of Electrical Engineers (IEE) (est.1871) and the Institution of Incorporated Engineers (IIE) (est.1930).

Mission: To inspire, inform and influence the global engineering community, supporting technology innovation to meet the needs of society.

Vision: Working to engineer a better world.

Members: Members provide a positive role in science, engineering and technology. They work in a wide range of disciplines in the following sectors: built environment; design and production; energy; information and communications; transport.

Approximate number of members: 168,000

Registration agreements with other institutions: Institute of Telecommunications Professionals (ITP).

| Licensed to award: | EngTech | IEng | CEng | ICTTech |
|----------------------------|---------|--------|--------|---------|
| Registered members: | 4,279 | 11,730 | 44,649 | 292 |
| Registered via agreements: | 2 | 4 | 1 | 10 |

Map icon: **Grades of Membership:** Student; Apprentice; Associate; Member (TMIET or MIET); Fellow (FIET).

Specialist interest groups: Numerous regional groups.

Member Benefits

Network icon: **Structure:** 100+ local networks in 150 countries around the world.

People icon: **Contact details:**
 Chief Executive and Secretary: Nigel Fine BSc MBA CEng FICE FIET
 Michael Faraday House, Six Hills Way, Stevenage,
 Herts SG1 2AY

+44 (0)1438 313 311 membership@theiet.org
www.theiet.org

Companies House No: RC000263 Registered Charity number: 211014

Institution of Fire Engineers (IFE)

Established in 1918. Incorporated in 1924.



Sector: Fire engineering and fire and rescue services

About: IFE upholds professional standards within all public and private fire sectors by offering assessment of knowledge, experience and development, and engages with major stakeholders to offer international conferences, identify and promote good practice and enhance technical networks worldwide. It is also an Ofqual recognised awarding organisation.

Mission: To encourage and improve the science and practice of fire extinction, fire prevention and fire engineering and all operations and expedients connected therewith, and to give an impulse to ideas likely to be useful in connection with or in relation to such science and practice to the members of the Institution and to the community at large.

Members: Members are involved in a number of areas such as: fire dynamics including ignition, chemistry and toxicology; consultations with government in the drafting and implementation of fire safety legislation and regulations; structural fire protection of buildings; fire insurance and arson investigation; behaviour pattern of persons faced with emergencies; fire detection and alarm systems; fire appliances; and automatic fire fighting systems.

Approximate number of members: 10,000

| Licensed to award: | EngTech | IEng | CEng |
|---------------------|---------|------|------|
| Registered members: | 195 | 22 | 243 |

Grades of Membership: Affiliate; Student; Technician (TIFireE); Graduate (GIFireE); Associate (AIFireE); Member (MIFireE); Fellow (FIFireE).

Specialist interest groups: Fire modelling; fire resistance, fire investigation, transport, competency and ethics, heritage buildings, industrial fire and risk and fire fighter safety.

Member Benefits

Structure: 19 branches in the UK; 22 international branches and numerous international networking groups.

Contact details:

Chief Executive Officer: Neil Gibbins QFSM FIFireE
IFE House, 64-66 Cygnet Court, Timothy's Bridge Road,
Stratford-upon-Avon, Warwickshire CV37 9NW

+44 (0)1789 261 463 membership@ife.org.uk

www.ife.org.uk

Companies House No: SC013267 Registered Charity number: SC012694

Institution of Gas Engineers and Managers (IGEM)

Established in 1863 as Institution of Gas Engineers.
Incorporated by Royal Charter in 1929.



Sector: Gas

About: IGEM is the leading chartered membership body for the gas industry; passionately committed to supporting the professional development of gas professionals globally and the production of recognised gas industry standards.

Mission: IGEM is a membership organisation that advances the related sciences and extends relevant knowledge for the benefit of the global gas industry.

Vision: To be the pre-eminent Institution for gas professionals across the world.

Members: Members are professionals based all over the world who work, support or have an interest in the gas industry, including: construction; design; education and training; extraction; installation, maintenance and repair; manufacturing; production, transmission and distribution; regulating; trading and consulting.

Approximate number of members: 4,000

Registration agreements with other institutions:

Permanent Way Institution (PWI).

| Licensed to award: | EngTech | IEng | CEng |
|----------------------------|---------|------|-------|
| Registered members: | 466 | 462 | 1,172 |
| Registered via agreements: | 13 | 5 | 3 |

Grades of Membership: Student; Graduate (GradIGEM); Gas Technician; Licensed Gas Technician (LGT AIGEM); Associate (AIGEM); Associate Member (AMIGEM); Member (MIGEM); Fellow (FIGEM) and Industrial Affiliate (company membership).

Specialist interest groups: Numerous regional groups.

Member Benefits

Structure: Eight regional sections in the UK, Young Persons Network (YPN), Far East District Section and Industrial Affiliate Section.

Contact details:

Chief Executive Officer: Sarb Bajwa
IGEM House, High Street, Kegworth, Derbyshire DE74 2DA
+44 (0)1509 678 150 general@igem.org.uk
www.igem.org.uk

Companies House No: RC000265 Registered Charity number: 214011

Institute of Highway Engineers (IHE)

Established in 1965. Incorporated in 1972.



Sector: Civil and highways engineering

About: IHE is a multi-disciplinary professional body and learned society run by and for practical engineers and allied professionals committed to sustainability and integrity.

Mission: To provide professional development opportunities, support and leadership for individuals to achieve and maintain professional recognition.

Vision: To be the Institute of choice for highway engineers.

Members: Members work in both the public and private sectors specialising in activity areas including: highway design and construction; traffic engineering and control; traffic management; maintenance and asset management; development management; road safety engineering; transport planning; traffic signal design; cycling infrastructure.

Members' work covers computing; traffic-calming and management; designing and maintaining roads; materials testing; road safety and sustainable transport planning.

Approximate number of members: 3,250

Registration agreements with other institutions:

Institute of Asphalt Technology (IAT).

| Licensed to award: | EngTech | IEng | CEng |
|---------------------|---------|------|------|
| Registered members: | 224 | 892 | 40 |

Grades of Membership: Student; Affiliate; Associate Member (AMIHE); Member (MIHE); Fellow (FIHE); Apprentice (AppIHE).

Specialist interest groups: Numerous regional groups.

Member Benefits

Structure: 15 branches in the UK.

Contact details:

Chief Executive: Richard Hayes CEng IHE DMS

De Morgan House, 58 Russell Square, London WC1B 4HS

+44 (0)202 7436 7487 membership@theihe.org

www.theihe.org

Companies House No: 1064239

Institute of Healthcare Engineering and Estate Management (IHEEM)

Established in 1943 as Institute of Hospital Engineering. Incorporated in 1967.



Sector: Healthcare estates

About: IHEEM is the UK's largest specialist institute for the healthcare estates sector devoted to developing careers and the provision of education and training.

Mission: To develop and support for the public benefit the art and science of healthcare engineering and healthcare estate management and to advance for public benefit research, education and training within this specialist area.

Vision: To be the Institute of choice for all health sector professionals working in the field of engineering and estate management.

Members: Members include: architects; builders; engineers; estate managers; surveyors; technicians; and other professionals engaged in the technical aspects of healthcare provision. Members may be employed in hospitals and trusts (NHS or private); in consultancies working in the healthcare field; or in industry (manufacturing or contracting) for healthcare.

Approximate number of members: 1,750

| Licensed to award: | EngTech | IEng | CEng |
|---------------------|---------|------|------|
| Registered members: | 89 | 320 | 131 |

Grades of Membership: Graduate (GIHEEM); Apprentice (AIHEEM); Crafts Person (CPIHEEM); Associate Member (AMIHEEM); Technician (TIHEEM); Member (MIHEEM); Fellow (FIHEEM).

Specialist interest groups: Decontamination; medical gas pipeline systems; water; electrical; ventilation; medical devices; architecture & design in the built environment; health & safety; resilience & sustainability; specialist engineering; international.

Member Benefits

Structure: 12 branches in the UK; two international branches.

Contact details:

Chief Executive: Julian Amey MA FRSA HonFSoPHE

2 Abingdon House, Cumberland Business Centre, Northumberland Road, Portsmouth PO5 1DS

+44 (0)23 9282 3186 office@iheem.org.uk

www.iheem.org.uk

Companies House No: 895080 Registered Charity number: 257133

Institution of Lighting Professionals (ILP)



Established in 1924 as Association of Public Lighting Engineers.
Incorporated in 1928.

Sector: Lighting

About: ILP is the UK and Ireland's largest and most influential professional lighting association, dedicated solely to excellence in lighting. Its key purpose is to promote excellence in all forms of lighting. This includes: interior; exterior; architectural; sports; road; flood; emergency; tunnel; security; festive lighting; and design and consultancy services. It also has strong links with other professional UK lighting bodies such as the International Association of Lighting Designers.

Vision: To unite the skills of engineering, design and technology in order to deliver quality lighting for the built environment and achieve public benefit.

Members: Members include lighting designers; consultants; manufacturers; architects and engineers, covering interior; exterior; sports; road; flood; emergency; tunnel; security and festive lighting, as well as design and consultancy services.

Approximate number of members: 2,100

| Licensed to award: | EngTech | IEng | CEng |
|---------------------|---------|------|------|
| Registered members: | 118 | 262 | 60 |

Grades of Membership: Apprentice; Student; Affiliate; Associate Member (AMILP); Member (MILP); Fellow (FILP); Honorary Member (HonMILP); Honorary Fellow (HonFILP).

Member Benefits

Structure: Eight branches in the UK and Ireland; branches in Middle East and North Africa.

Contact details:

Chief Executive: Richard G Frost MA (Cantab) FIAM
Regent House, Regent Place, Rugby, Warwickshire CV21 2PN
+44 (0)1788 576 492 info@theilp.org.uk
www.theilp.org.uk

Companies House No: 227499 Registered Charity number: 268547

Institute of Marine Engineering, Science & Technology (IMarEST)



Established in 1889 as Institute of Marine Engineers.
Incorporated by Royal Charter in 1993.

Sector: Marine

About: The IMarEST is an international membership body and learned society bringing marine engineers, scientists and technologists together. The largest marine organisation of its kind, it spans 128 countries and works to promote the scientific development of marine disciplines, providing opportunities for the exchange of ideas and practices and upholding the status, standards and expertise of marine professionals worldwide.

It is an NGO with consultative status at the UN's International Maritime Organization (IMO), observer status at the Intergovernmental Oceanographic Commission, International Hydrographic Organization, the London Convention/London Protocol (LC/LP) and GESAMP and it has special consultative status with ECOSOC.

Mission: To work with the global marine community to promote the scientific development of marine engineering, science and technology, providing opportunities for the exchange of ideas and practices and upholding the status, standards and expertise of marine professionals worldwide.

Vision: A world where marine resources and activities are sustained, managed and developed for the benefit of humanity.

Members: Members work in a vast range of professions including: ship design; coast and ocean mapping and hydrography; construction; maintenance and decommissioning; defence and naval engineering; marine renewable energy; offshore oil and gas; marine engineering systems and equipment; marine safety and security; marine conservation; power and propulsion; marine biology; climatology and marine meteorology; oceanography and natural hazards assessment.

Approximate number of members: 19,000

| Licensed to award: | EngTech | IEng | CEng |
|---------------------|---------|-------|-------|
| Registered members: | 457 | 2,022 | 4,881 |

Grades of Membership: Student (SIMarEST); Affiliate; Associate Member (AMIMarEST); Member (MIMarEST); Fellow (FIMarEST).

Member Benefits

Structure: 48 branches worldwide.

Contact details:

Chief Executive: David Loosley
1 Birdcage Walk, Westminster, London SW1H 9JJ
+44 (0)20 7382 2656 info@imarest.org
www.imarest.org

Companies House No: RC000256 Registered Charity number: 212992

Institution of Mechanical Engineers (IMechE)

Established in 1847. Incorporated by Royal Charter in 1930.

Institution of
**MECHANICAL
ENGINEERS**

Sector: Mechanical engineering

About: With a 160-year heritage supporting IMechE, today's Institution is a forward-looking, campaigning organisation. By working with leading companies, universities and think tanks, IMechE creates and shares knowledge to provide government, businesses and the public with fresh thinking and authoritative guidance on all aspects of mechanical engineering. IMechE's members work at the heart of the country's most important and dynamic industries.

Vision: Improving the world through engineering.

Members: From smart phones to goal-line technology, from artificial hearts to re-usable spacecraft, and from air capture devices addressing carbon emissions to mapping the human genome, our members are at the forefront of ground-breaking innovations which offer unprecedented opportunities to further human understanding and enable global society to become ever more advanced and sophisticated in its capabilities, and adventurous in its possibilities.

Approximate number of members: 117,750

| Licensed to award: | EngTech | IEng | CEng |
|---------------------|---------|-------|--------|
| Registered members: | 2,138 | 1,812 | 38,924 |

Grades of Membership: Affiliate; Student Affiliate; Associate Member (AMIMechE); Member (MIMechE); Fellow (FIMechE).

Specialist interest groups: Ten groups including: combustion engines and fuels; energy; environment and sustainability; safety and reliability; and structural technology and materials.

Member Benefits

Structure: Eight international regions including the UK. Each region is made up of branches and groups.

Contact details:

Chief Executive Officer: Stephen Tetlow MBE CEng FIMechE
1 Birdcage Walk, Westminster, London SW1H 9JJ
+44 (0)20 7304 6862 enquiries@imeche.org
www.imeche.org

Companies House No: RC000266 Registered Charity number: 206882

Institute of Measurement and Control (InstMC)

Established in 1944. Incorporated by Royal Charter in 1975.

Inst
MC

Sector: Automation, measurement (instrumentation) and control (processes and systems)

About: InstMC is committed to promoting the professional excellence of engineers and technologists at all levels in the automation, instrumentation, control and related industries. Its aims are to advance the science and practice of measurement and control technologies and their various applications; to foster the exchange of views and the communication of knowledge and ideas in the activities; and to promote the professional qualification and standing of its members. The Institute is therefore both a learned society and a professional qualifying body occupying a niche in the automation focused industries.

Members: Members typically work in measurement and control, systems science or in a variety of engineering disciplines underpinned by measurement (especially electrical/electronic, mechanical or chemical). Mathematicians, physicists and chemists (particularly analytical chemists) are also represented in membership. Major areas of work are instrumentation companies, end users (process industries, utilities, transport) and contractors.

Approximate number of members: 3,500

| Licensed to award: | EngTech | IEng | CEng |
|---------------------|---------|------|-------|
| Registered members: | 40 | 362 | 1,062 |

Grades of Membership: Student; Associate; Technician (TInstMC); Member (MInstMC); Fellow (FInstMC).

Specialist interest groups: Numerous regional groups.

Member Benefits

Structure: 13 branches in the UK; four overseas branches.

Contact details:

Chief Executive: Patrick A Finlaye PhD CEng FIMechE
87 Gower Street, London WC1E 6AF
+44 (0)20 7387 4949 membership@instmc.org
www.instmc.org

Companies House No: RC000257 Registered Charity number: 269815

Institution of Royal Engineers (InstRE)

Established in 1875. Incorporated by Royal Charter in 1923.



Sector: Military engineering and science

Book icon **About:** InstRE was established in 1875 for the advancement of military science and engineering. Its members maintain engineering expertise that allows the Army to live, move and fight. They do this by providing the infrastructure and life support systems necessary to live and operate on deployed operations. Members also provide mobility for the UK's Armed Forces through the construction of roads, bridges and airfields, whilst denying their use to others, protecting the forces through protective structures, search and explosive ordnance disposal.

Mission: To promote the acquisition of historical and scientific military engineering knowledge in order to ensure that engineering support to the Armed Forces is delivered efficiently, utilising new and relevant technology.

Vision: To promote military engineering across the engineering sector for the benefit of the Corps of Royal Engineers and society, and to be recognised throughout defence, government and industry as the Institution of choice for professional military engineering.

Members: Membership is open to officers, warrant officers, senior and junior NCOs, both Regular and Reserve, serving in or retired from the Corps of Royal Engineers. Soldiers, or Sappers as they are known, join as Apprentice Technician Members.

Approximate number of members: 12,000

| | | | |
|----------------------------|----------------|-------------|-------------|
| Licensed to award: | EngTech | IEng | CEng |
| Registered members: | 677 | 32 | 20 |

Grades of Membership: Honorary Associate Member; Honorary Member; Apprentice Technician Member; Member (MInstRE); Fellow (FInstRE).

Member Benefits

Structure: Six Regions; five in the UK; one in Germany.

Contact details:

Chief Executive and Secretary: Nigel Montagu MA CEng MIMechE MIET MInstRE

Brompton Barracks, Chatham, Kent ME4 4UG

+44 (0)1634 822298 secretary@instre.org
www.InstRE.org

Companies House No: RC000273 Registered Charity number: 249882

Institute of Acoustics (IOA)

Established in 1974. Incorporated in 1974.



Sector: Acoustics, noise and vibration

Book icon **About:** IOA is the UK's professional body for those working in acoustics, noise and vibration.

Mission: To promote our vision through the advancement of the art, science, engineering and technology of acoustics.

Vision: To see members across all disciplines recognised as professionals of the highest integrity and competence.

Members: Members work in most of the major educational, industrial, planning and consultancy establishments and their areas of expertise include: aerodynamic noise; architectural acoustics; auditory acoustics; building acoustics; electroacoustics; engineering dynamics; environmental acoustics; infra- and ultra-sonics; musical acoustics; noise and vibration; physical acoustics; speech; transportation noise; and underwater acoustics.

They might work in architectural and engineering consultancies on projects as diverse as opera houses, stadia, schools, the automotive industry, sonar and many other fields and have qualifications in electrical or mechanical engineering, physics or mathematics.

Approximate number of members: 3,000

| | | |
|----------------------------|-------------|-------------|
| Licensed to award: | IEng | CEng |
| Registered members: | 16 | 186 |

Grades of Membership: Sponsor; Student; Affiliate; Technician Member; Associate Member (AMIOA); Member (MIOA); Fellow (FIOA); Honorary Fellow.

Specialist interest groups: Eleven in total, including: building acoustics; electroacoustics; environmental noise; measurement and instrumentation; musical acoustics; noise and vibration engineering; physical acoustics; underwater acoustics; and young members.

Member Benefits

Structure: Eleven branches in the UK and Ireland.

Contact details:

Chief Executive: Allan Chesney

3rd Floor St Peter's House, 45-49 Victoria Street, St. Albans, Hertfordshire AL1 3WZ

+44 (0)1727 848 195 ioa@ioa.org.uk
www.ioa.org.uk

Companies House No: 1157249 Registered Charity number: 267026

Institute of Materials, Minerals and Mining (IOM3)

Established in 1869 as Institution of Metallurgists.
Incorporated by Royal Charter in 1899.



Sector: Materials, minerals and mining

Book icon **About:** IOM3 is a major UK based engineering institution whose activities encompass the whole materials cycle, from exploration and extraction, through characterisation, processing, forming, finishing and application, to product recycling and land reuse.

Mission: To promote the science, design, engineering and technology of materials, minerals and mining and their practical applications.

Vision: To be recognised as the global leader for professionals involved with the materials cycle.

Members: Members represent a combination of scientific, technical and human resources, linking industry, government, research and the academic world. They work in all aspects of materials science and engineering, geology, mining and associated technologies, mineral and petroleum engineering and extraction metallurgy.

Approximate number of members: 18,000

| | | | |
|-------------------------------------|---------|------|-------|
| Open icon Licensed to award: | EngTech | IEng | CEng |
| Registered members: | 94 | 394 | 5,408 |

Location pin icon **Grades of Membership:** Affiliate; Student; Technician; Graduate (Grad IMMM); Professional Graduate (ProfGrad IMMM); Associate Member (AIMMM); Professional Member (MIMMM); Fellow (FIMMM).

Specialist interest groups: 17 technical divisions, societies and associations, including: applied earth science; automotive; castings; ceramics; iron and steel; packaging; sustainable development; and wood technology.

Member Benefits

Network icon **Structure:** 55 affiliated local societies in seven UK regions; four overseas regions.

Person icon **Contact details:**
Chief Executive Officer: Dr Bernie Rickinson CEng FIMMM
297 Euston Road, London NW1 3AD
+44 (0)20 7451 7300 membership@iom3.org
www.iom3.org

Registered Charity number: 269275



Institute of Physics (IOP)

Established in 1874. Incorporated by Royal Charter in 1970.

Sector: Operates across a number of sectors including: nuclear; space; defence; automotive; consultancy; medical; transport; academia; research; energy; education and finance

Book icon **About:** IOP is a leading scientific membership society working to advance physics for the benefit of all. Alongside professional support for its members, it engages with policymakers and the public to increase awareness and understanding of the value that physics holds for all of us.

Mission: To advance physics for the benefit of all.

Vision: IOP will be the leading scientific society promoting physics and bringing physicists together.

Members: IOP has a diverse membership that ranges from students through to qualified professionals in all disciplines of the physics sector to the still interested and involved retired community.

Approximate number of members: 45,000

| | |
|-------------------------------------|------|
| Open icon Licensed to award: | CEng |
| Registered members: | 727 |

Location pin icon **Grades of Membership:** IOPimember; Affiliate Member; Student; Associate Member (AMInstP); Member (MInstP); Fellow (FInstP).

Specialist interest groups: 48 specialist groups including: physics research and its application; professional aspects of physicists working in industry; and wider issues that relate to physics and society.

Member Benefits

Network icon **Structure:** 15 regional branches in the UK and Ireland; strong international presence.

Person icon **Contact details:**
Chief Executive: Professor Paul Hardaker FInstP FRMetS CMet
76 Portland Place, London W1B 1NT
+44 (0)20 7470 4800 membership@iop.org
www.iop.org

Companies House No: RC000261
Registered Charity number: 293851/SCO40092

Institute of Physics and Engineering in Medicine (IPEM)



First established in 1995 as Institution of Physics in Engineering Medicine and Biology. Incorporated in 1995.

Sector: Bio-medical engineering


Book icon **About:** IPEM is dedicated to bringing together physical science, engineering and clinical professionals in academia, healthcare services and industry. It is a hybrid of three organisations formed many years ago: the Hospital Physicists' Association (est.1943), the Hospital Physics Technicians' Association (est.1952) and the Biological Engineering Society (est.1960). These organisations, over a period of decades, have undergone various amalgamations and transformations until in 1995 the Institute of Physics and Engineering in Medicine was formed.

Mission: To promote for the public benefit the advancement of physics and engineering applied to medicine and biology and to advance public education in the field.

Vision: To ensure and enhance the quality, safety and effectiveness of science and technology in healthcare in all settings.

Members: IPEM supports the work of scientists, engineers and technologists working in medicine, or seeking to better understand human health or disease.

Approximate number of members: 4,500

|  Licensed to award: | EngTech | IEng | CEng |
|--|---------|------|------|
| Registered members: | 13 | 22 | 80 |

Pin icon **Grades of Membership:** Affiliate; Associate; Professional Affiliate (PAMIPEM), Member (MIPEM); Fellow (FIPEM).

Specialist interest groups: Ten special interest groups, including: clinical engineering; physiological measurement; diagnostic; radiology; radiation protection; informatics and computing; radiotherapy; magnetic resonance imaging; rehabilitation and biomechanics engineering; nuclear medicine; ultrasound; non-ionising radiation; academic; and bioengineering.

Member Benefits

Pin icon **Structure:** Regional groups in the UK.

Pin icon **Contact details:**
Chief Executive: Rosemary Cook CBE Hon DLitt MSc PGDip RGN
Fairmount House, 230 Tadcaster Road, York YO24 1ES
+44 (0)1904 610 821 office@ipem.ac.uk
www.ipem.ac.uk

Companies House No: 3080332 Registered Charity number: 1047999

Institution of Railway Signal Engineers (IRSE)



Established in 1912. Incorporated in 1912.


Sector: Railway signalling and telecommunications, and allied disciplines

Book icon **About:** IRSE is an international organisation, active throughout the world, and is the professional Institution for all those engaged or interested in railway signalling and telecommunications, and allied disciplines.

Mission: To promote interest, understanding and learning in the technology and practice for railway operation and the control of trains for all types of railway.

Members: Membership is open to any person involved in the management, planning, design, installation, maintenance, manufacture or operation of railway signalling, telecommunications or associated equipment.

Approximate number of members: 5,400

|  Licensed to award: | EngTech | IEng | CEng |
|--|---------|------|------|
| Registered members: | 39 | 44 | 75 |

Pin icon **Grades of Membership:** Affiliate; Accredited Technician; Associate Member (AMIRSE); Member (MIRSE); Fellow (FIRSE); Companion (ComplRSE).

Specialist interest groups: Young Members and Minor Railways.

Member Benefits

Pin icon **Structure:** Five sections in the UK; 14 international sections.

Pin icon **Contact details:**
Chief Executive and Secretary: Francis How MA CEng FIRSE MIET
4th Floor, 1 Birdcage Walk, Westminster, London SW1H 9JJ
+44 (0)20 7808 1180 hq@irse.org
www.irse.org

Companies House No: 125685 Registered Charity number: 1046999

Institution of Structural Engineers (IStructE)

Established in 1908. Incorporated by Royal Charter in 1934.

Sector: Structural engineering

About: To accredit and support highly qualified structural engineers for the safe, sustainable and efficient design, construction, adaptation, maintenance and refurbishment of buildings, bridges and other structures worldwide.

Mission: To lead, support and nurture the development of structural engineering worldwide. It seeks to achieve this by promoting world-class standards of technical skill, safety, efficiency, innovation and excellence in structural engineering.

Vision: To lead, support and nurture the development of structural engineering worldwide. It seeks to achieve this by promoting world-class standards of safety, efficiency and excellence in structural engineering.

Members: Structural engineers work closely with architects and construction professionals and are key part of the project team. They work to build a huge range of structures, from small-scale home extensions to bridges and sports stadia. Institution membership confirms competence as an engineer working to the highest standards in the world. Only the best thinkers, designers and innovators successfully meet our rigorous entrance requirements.

Approximate number of members: 28,000

| Licensed to award: | EngTech | IEng | CEng |
|---------------------|---------|------|-------|
| Registered members: | 125 | 959 | 9,175 |

Grades of Membership: Affiliate; Student; Graduate; Technician (TIStructE); Associate-Member (AMIStructE); Chartered Member (MIStructE); Fellow (FIStructE).

Specialist interest groups: The Earthquake Engineering Field Investigation Team (EEFIT), Structural Safety, Conservation Accreditation Register for Engineers (CARE), RedR, fibUK, Structural Engineers Register Ltd.

Member Benefits

Structure: 18 regional groups in the UK and Ireland; eleven international regional groups.

Contact details:
Chief Executive Officer: Martin Powell
47-58 Bastwick Street, London EC1V 3PS
+44 (0)20 7235 4535 membership@istructe.org
www.istructe.org

Companies House No: RC000274 Registered Charity number: 233392

Institute of Water

Established in 1945 as Association of Water Distribution Officers. Incorporated in 1954.

Sector: Water and waste water

About: The Institute of Water is a professional body solely dedicated to supporting the careers of people working in the UK Water Sector. It supports and develops members' careers by providing a unique learning, developing and networking framework.

Mission: To inspire our members to reach their potential through learning, development, recognition and networking.

Vision: To have the best people working in the UK Water Sector.

Members: Membership of the Institute of Water has something to offer everyone employed in the water sector, from a new recruit to a Managing Director. Members are either employed, in study or have an interest in the water, wastewater and associated industries.

Approximate number of members: 2,000

| Licensed to award: | EngTech | IEng | CEng |
|---------------------|---------|------|------|
| Registered members: | 43 | 183 | 24 |

Grades of Membership: Student Member; Associate Member; Technician Member (TMIWater); Corporate Member (MIWater); Fellow Member (FIWater); Honorary Fellow Member.

Specialist interest groups: Numerous regional groups.

Member Benefits

Structure: Eight branches in the UK; international presence.

Contact details:
Chief Executive: Lynn Cooper
4 Carlton Court, Team Valley, Gateshead NE11 0AZ
+44 (0)191 422 0088 info@instituteofwater.org.uk
www.instituteofwater.org.uk

Companies House No: 539193



Nuclear Institute (NI)

Established in 2009, a merger of British Nuclear Energy Society and Institution of Nuclear Engineers. Incorporated in 2008.

Sector: Nuclear

Book icon **About:** NI is the UK membership organisation and professional body for all who work in the nuclear sector. It maintains the highest standards of nuclear professionalism through the Nuclear Delta® and help the careers of our members through continued learning, networking and professional registration.

The Institute consists of nine UK regional branches and the Young Generation Network (YGN) who have strong links with the global network of YGN committees. Of most importance to the NI is the education and training of nuclear professionals and we work alongside partners to promote nuclear professionalism throughout the sector from certified apprentice programmes to continuing professional development at seminars and workshops to engaging in government consultations.

Mission: The advancement of nuclear professionalism through education relating to nuclear energy, and its application and ancillary subjects.

Members: Members include scientists and engineers worldwide, many of whom are leading figures in the nuclear industry. Their work ranges from fuel production to reprocessing, through plant design, construction and operation, and includes its maintenance, decommissioning and dismantling. They cover research and development to meet the industry's needs. Some work with particle accelerators used to generate intense sources of nuclear radiation and manufacture radioactive isotopes for industrial and medical use.

Approximate number of members: 2,200

| Licensed to award: | EngTech | IEng | CEng |
|---------------------|---------|------|------|
| Registered members: | 6 | 69 | 229 |

Pin icon **Grades of Membership:** Affiliate, Associate (Learned Grades); Professional Member (MNUcl); Fellow (FNUcl).

Specialist interest groups: Numerous regional groups including Young Generation Network (YGN) and Women in Nuclear (WiNUK).

Member Benefits

Network icon **Structure:** Ten branches in the UK; one branch in South Africa

Person icon **Contact details:**

Chief Executive: Sarah Beacock FEI

CK International House, 1-6 Yarmouth Place, London W1J 7BU

+44 (0)203 475 4701 membership@nuclearinst.com
www.nuclearinst.com

Companies House No: 6574762 Registered Charity number: 1125404



Royal Aeronautical Society (RAeS)

Established in 1866. Incorporated by Royal Charter in 1949.

Sector: Aerospace and aviation

Book icon **About:** As the world's only professional body dedicated to the entire aerospace community, RAeS was established in 1866 to further the art, science and engineering of aeronautics and has been at the forefront of global developments ever since.

Mission: To ensure the advancement of aeronautical art, science and engineering and to promote that species of knowledge which distinguishes the profession of aeronautics.

Vision: To be recognised as the premier resource for aeronautical knowledge, debate and opinion and maintain the highest professional standards across all aeronautical disciplines.

Members: There is a grade of membership for everyone, from those with an interest in the sector to aerospace professionals at every level and in every discipline.

Approximate number of members: 23,000

| Licensed to award: | EngTech | IEng | CEng |
|---------------------|---------|------|-------|
| Registered members: | 187 | 701 | 3,356 |

Pin icon **Grades of Membership:** Student Affiliate; Apprentice Affiliate; Affiliate; Associate (ARAEs); Associate Member (AMRAEs); Member (MRAEs); Fellow (FRAEs); Companion (CRAEs).

Specialist interest groups: Numerous regional groups.

Member Benefits

Network icon **Structure:** 37 branches in the UK; 30 international branches; four divisions each with its own branch network.

Person icon **Contact details:**

Chief Executive: Simon Luxmoore MBA FRAeS

No. 4 Hamilton Place, London W1J 7BQ

+44 (0)20 7670 4300 membership@aerosociety.com
www.aerosociety.com

Companies House No: RC000439 Registered Charity number: 313708

Royal Institution of Naval Architects (RINA)



Established in 1860. Incorporated by Royal Charter in 1910.

Sector: Maritime

About: RINA is a world renowned and highly respected international professional institution and learned society founded to advance the art and science of ship design.

Mission: To set standards of professional competence and conduct and to encourage and assist its members to both achieve and maintain those standards.

Vision: To continue to provide a professional qualification which is internationally recognised as demonstrating the achievement of the highest standards of professional competence and integrity, or the commitment to achieving those standards at the earliest opportunity.

Members: Members are mainly professional engineers who are involved at all levels in the design, construction and maintenance of marine vessels and structures.

Approximate number of members: 10,000

| Licensed to award: | EngTech | IEng | CEng |
|---------------------|---------|------|-------|
| Registered members: | 12 | 105 | 2,134 |

Grades of Membership: Student; Junior Member; Associate (AssocRINA); Associate Member (AMRINA); Member (MRINA); Fellow (FRINA).

Member Benefits

Structure: More than 30 branches worldwide.

Contact details:

Chief Executive: Trevor Blakeley CEng FRINA FIMarEST FIMechE
8-9 Northumberland Street, London WC2N 5DA

+44 (0)20 7235 4622 hq@rina.org.uk
www.rina.org.uk

Companies House No: RC000270 Registered Charity number: 211161

Society of Environmental Engineers (SEE)



Established in 1959. Incorporated in 1979.

Sector: Environmental engineering across all disciplines of engineering

About: SEE is a professional Society which exists to promote awareness of the discipline of environmental engineering and to provide members of the Society with information, training and representation within this field.

Mission: To promote and advance the art, science and technology of environmental engineering in all their aspects for the benefit of the public.

Members: Members are concerned with the measurement, modelling, control and simulation of all types of environment. Their work brings together aspects of mechanical, electrical, electronic, aeronautical, civil, energy and chemical engineering. They can also work in the fields of physics, acoustics, metallurgy, microbiology, pharmacy and many other technical and scientific disciplines.

Approximate number of members: 750

Registration agreements with other institutions:

Association of Cost Engineers (ACostE); Institute of Concrete Technology (ICT); Institute of Corrosion (ICorr); Institute of Demolition Engineers (IDE); Institute of Explosives Engineers (IExpE); Institute of Materials Finishing (IMF); International Council on Systems Engineering (UK Chapter) (INCOSE); Safety and Reliability Society (SaRS).

| Licensed to award: | EngTech | IEng | CEng |
|----------------------------|---------|------|------|
| Registered members: | 1 | - | 29 |
| Registered via agreements: | 6 | 21 | 188 |

Grades of Membership: Student; Graduate; Associate; Member (MSEE); Fellow (FSEE); Honorary Fellow (HonFSEE); Joint Member (JMSEE).

Member Benefits

Structure: Networks in the UK; a Chapter in Hong Kong.

Contact details:

Chief Executive: Professor Raymond P Clark OBE PhD CEng CEnv HonFSEE

22 Greencoat Place, London, SW1P 1PR

+44 (0)207 630 2142 office@environmental.org.uk
www.environmental.org.uk

Companies House No: 1438715 Registered Charity number: 278338

Society of Operations Engineers (SOE)

Established in 2000, a merger between Institute of Road Transport Engineers (1944), Institute of Plant Engineers (1946) and Bureau of Engineer Surveyors (1965).

Sector: Operations Engineering

About: SOE works to advance operations engineering for the benefit of everyone through education, training, study and research. SOE also establishes and maintains standards of competence and conduct for those engaged in operations engineering professionally, with an emphasis on enhancing public safety. Through its professional sectors of IRTE (Institute of Road Transport Engineers), IPlantE (Institution of Plant Engineers) and BES (Bureau of Engineer Surveyors), SOE directly influences the road transport, plant and engineer surveying sectors, developing best practice and improving compliance across the board.

Mission: To promote safe, efficient and sustainable operations engineering to the benefit of society.

Members: Members work in all aspects of operations engineering including: acquisition; commissioning; maintenance; asset management; and product improvement. Their work function often has most immediate impact on end users of the product or service. Members comprehend functions of different elements of systems and their interrelationships. They have understanding of legal, financial and logistical dimensions of an organisation to appreciate how engineering can best add value.

Approximate number of members: 16,600

Registration agreements with other institutions:

Institution of Diesel and Gas Turbine Engineers (IDGTE).

| Licensed to award: | EngTech | IEng | CEng |
|----------------------------|---------|-------|------|
| Registered members: | 2,699 | 2,103 | 863 |
| Registered via agreements: | 9 | 1 | - |

Grades of Membership: Student; Graduate; Associate Member (AMSOE); Member (MSOE); Fellow (FSOE).

Specialist interest groups: Road transport, plant engineering, engineer surveyors, apprentice and student members; and military.

Member Benefits

Structure: 42 regions in the UK; 13 international regions.

Contact details:

Managing Director: Ian Chisholm IEng FSOE FIRTE
22 Greencoat Place, London SW1P 1PR

+44 (0)20 7630 1111 membership@soe.org.uk
www.soe.org.uk

Companies House No: 3667147 Registered Charity number: 1081753

The Welding Institute

Established in 1923. Incorporated in 1999.

Sector: Welding, joining and allied technologies

About: The Welding Institute is the leading professional engineering institution responsible for the professional registration and certification of welding and joining personnel worldwide. It embraces a professional institution, a certification body, a training organisation and a world renowned research and technology centre.

The Welding Institute fosters a deep-seated knowledge base in the development of occupational standards and vocational qualification. As an influential lobbying group, it offers authoritative guidance to statutory bodies like the British Standards Institution and even central government, charged with making the rules.

Mission: To deliver globally recognised and valued qualifications and personal membership services in welding, joining and allied technologies to an expanding membership base.

Vision: To be the world class professional engineering institution for welding, joining and allied technologies.

Members: Members are professionals and associates working across a number of industries using different technologies, including: welding; coating; fabrications; materials; polymers, NDT, structural integrity; inspection and more.

Approximate number of members: 5,000

| Licensed to award: | EngTech | IEng | CEng |
|---------------------|---------|------|------|
| Registered members: | 949 | 287 | 475 |

Grades of Membership: Associate (AWeldI); Technician (TechWeldI); Member (MWeldI); Fellow (FWeldI).

Specialist interest groups: Numerous regional groups.

Member Benefits

Structure: Currently eight specialist interest technical groups covering: manufacturing; welding processes; materials; offshore oil and gas; pressure and process plant; structural integrity; polymers; NDT and condition monitoring.

Contact details:

Associate Director: EUR ING Chris Eady CEng MRAS FWeldI
Granta Park, Great Abington, Cambridge CB21 6AL

+44 (0)1223 899000 theweldinginstitute@twi.co.uk
www.theweldinginstitute.com

Companies House No: 00405555

Professional Affiliates

Professional Affiliates are engineering institutions closely associated with, but not licensed by, the Engineering Council. They are an influential group, each of which has furthered the knowledge and understanding of a particular area or aspect of engineering and technology.

The benefits of affiliation, for which partner organisations pay an annual fee, include the opportunity to offer professional registration to their members through an agreement with an existing licensed professional engineering institution. Access to information becomes available for staff and members via the Engineering Council's extranet, networks and annual seminars, plus they have the opportunity to contribute to industry developments. Several Professional Affiliates have themselves progressed to licensed institution status.

Membership benefits are similar to those of the licensed [professional engineering institutions](#), but please visit the relevant website for full details.

Please note that all registration numbers on the following pages are correct as at 31 December 2016. They represent fee-paying, final stage registered members only.

Professional Affiliates with registration agreements

| Professional Affiliate | Registration Agreement with licensed institution | Registration Agreement Covers | | | |
|--|--|-------------------------------|------|------|--------|
| | | EngTech | IEng | CEng | ICTech |
| Association of Cost Engineers (ACostE) | Society of Environmental Engineers (SEE) | ✓ | ✓ | ✓ | |
| Chartered Institution of Civil Engineering Surveyors (ICES) | Institution of Civil Engineers (ICE) | ✓ | ✓ | ✓ | |
| Institute of Asphalt Technology (IAT) | Institute of Highway Engineers (IHE) | ✓ | ✓ | ✓ | |
| Institute of Corrosion (ICorr) | Society of Environmental Engineers (SEE) | ✓ | ✓ | ✓ | |
| Institute of Concrete Technology (ICT) | Society of Environmental Engineers (SEE) | ✓ | ✓ | ✓ | |
| Institute of Demolition Engineers (IDE) | Society of Environmental Engineers (SEE) | ✓ | ✓ | ✓ | |
| Institution of Diesel and Gas Turbine Engineers (IDGTE) | Society of Operations Engineers (SOE) | ✓ | ✓ | ✓ | |
| Institute of Explosives Engineers (IExpE) | Society of Environmental Engineers (SEE) | ✓ | ✓ | ✓ | |
| Institute of Materials Finishing (IMF) | Society of Environmental Engineers (SEE) | ✓ | ✓ | ✓ | |
| International Council on Systems Engineering (UK Chapter) (INCOSE) | Society of Environmental Engineers (SEE) | ✓ | ✓ | ✓ | |
| Institute of Refrigeration (IoR) | Chartered Institution of Building Services Engineers (CIBSE) | ✓ | ✓ | ✓ | |
| Institute of Telecommunications Professionals (ITP) | Institution of Engineering and Technology (IET) | ✓ | ✓ | ✓ | ✓ |
| Permanent Way Institution (PWI) | Institution of Gas Engineers and Managers (IGEM) | ✓ | ✓ | ✓ | |
| The Safety and Reliability Society (SaRS) | Society of Environmental Engineers (SEE) | ✓ | ✓ | ✓ | |

Association of Cost Engineers (ACostE)

Established in 1961. Incorporated in 1962.



Sector: Engineering; manufacturing; construction; services and project management

Book icon **About:** ACostE represents the professional interests of those with responsibility, at all levels, for the quantification, planning, management and control of processes and resources (including cost and time), across all work activities.

Mission: To provide services for members to enable them to advance in, and to promote the application of, scientific principles and techniques in the disciplines of: estimating, monitoring controlling and reporting cost; resources and logistics; planning; scheduling; risk; investment appraisal; and profitability of engineering activities, products and projects.

Members: Members work in a number of areas including: estimating; cost engineering; quantity surveying; planning and scheduling; financial and commercial management; value engineering; project control; project management; risk management; quality assurance; and contracts.

Approximate number of members: 1,800

Agreements with licensed institutions to register members: Society of Environmental Engineers (SEE).

| Registration agreement covers: | EngTech | IEng | CEng |
|--------------------------------|---------|------|------|
| Registered members: | - | 10 | 34 |

Pin icon **Grades of Membership:** Associate (AACostE); Student; Graduate (GACostE); Member (MACostE); Fellow (FACostE).

Specialist interest groups: Numerous, including: cost and project control; estimating and analysis; engineering; manufacturing.

Member Benefits

Pin icon **Structure:** Five regional groups in the UK, one international regional group.

People icon Contact details:

Honorary President: Angela Pammenter MSc FACostE
Lea House, 5 Middlewich Road, Sandbach, Cheshire CW11 1XL

+44 (0)1270 764 798 President@acoste.co.uk
www.acoste.org.uk

Companies House No: 737709

Association for Project Management (APM)

Established in 1972. Incorporated in 1975. Incorporated by Royal Charter in 2017.



Sector: All sectors

Book icon **About:** APM is the largest professional body of its kind in Europe. It is committed to developing and promoting project and programme management by creating a movement of individuals and organisations dedicated to a vision of a world in which all projects succeed.

Mission: To provide leadership to the movement of committed organisations and individuals who share our passion for improving project outcomes.

Members: Membership is available to both individuals and organisations from all industries and sectors. APM's membership community consists of project, programme and portfolio professionals.

Approximate number of members: 22,000 individual and 550 corporate members

Pin icon **Grades of Membership:** Student; Associate; Full (MAPM); Fellow (FAPM).

Specialist interest groups: Numerous, including: enabling change; women in project management; risk management; and programme management.

Member Benefits

Pin icon **Structure:** 12 UK branches; one international branch.

People icon Contact details:

Chief Executive: Sara Drake
Ibis House, Summerleys Road, Princes Risborough,
Bucks HP27 9LE

+44 (0)845 458 1944 info@apm.org.uk
www.apm.org.uk

Companies House No: 1218334 Registered Charity number: 290927

Chartered Association of Building Engineers (CABE)



Established in 1925 as the Association of Building Engineers.
Incorporated by Royal Charter in 2013.

Sector: Building Engineering

About: CABE is a leading body for professionals specialising in the design, construction, evaluation and maintenance of building construction.

Mission: To assist members in their lifelong development, ensuring that they achieve their full potential, to act as a respected voice for Building Engineers and the public and to be renowned for maintaining the highest possible standards.

The ethos can best be summarised as Developing Professionals, Sharing Knowledge, Raising Standards.

Members: Members are experts in the use of technology in the design, construction, assessment and maintenance of the built environment.

Approximate number of members: 6,600

Grades of Membership: Student; Technician; Associate (ACABE); Graduate (Grad CABE); Member (MCABE); Fellow (FCABE).

Member Benefits

Structure: 12 regions in the UK and Ireland; six international regions.

Contact details:

Chief Executive Officer: Dr John Hooper CDir FIOD FCI

Lutyens House, Billing Brook Road, Weston Favell,
Northampton NN3 8NW

+44 (0)1604 404 121 building.engineers@cbuild.com

www.cbuild.com/home

Companies House No: RC000867

Chartered Institution of Civil Engineering Surveyors (ICES)



Established in 1969. Incorporated by Royal Charter in 2009.

Sector: Construction

About: ICES is an international qualifying body dedicated to the regulation, education and training of surveyors working within civil engineering. It prides itself on its achievement as an internationally renowned centre of excellence in the art and science of civil engineering surveying to serve the public and satisfy the needs of the construction industry throughout the world.

Mission: To advance the science and art of civil engineering surveying in all aspects of the specialisations of geospatial engineering and commercial management within civil engineering for the benefit of the public, by upholding and advancing the standards of education, competence, practice and conduct of its members.

Vision: To be recognised as the foremost UK-based professional institution for specialists employed in geospatial engineering and commercial management in the civil engineering industry.

Members: Members include: civil engineers; surveyors; and individuals interested in the construction industry.

Approximate number of members: 5,000

Agreements with licensed institutions to register members: Institution of Civil Engineers (ICE).

| Registration agreement covers: | EngTech | IEng | CEng |
|--------------------------------|---------|------|------|
| Registered members: | - | - | 9 |

Grades of Membership: Student; Affiliate; Graduate (GCInstCES); Technical Member (TCInstCES); Member (MCInstCES); Fellow (FCInstCES).

Member Benefits

Structure: Nine regional groups in the UK and Ireland; three international regional groups.

Contact details:

Chief Executive Officer: Bill Pryke MA HonFCInstCES

Dominion House, Sibson Road, Sale, Cheshire M33 7PP

+44 (0)161 972 3100 info@cices.org

www.cices.org

Companies House No: RC000832 Registered Charity number: 1131469

Chartered Quality Institute (CQI)

Established in 1919. Incorporated by Royal Charter in 2006.

Sector: Industry; commerce; the public and voluntary sectors

About: CQI is the chartered body for quality professionals. We improve the performance of organisations by developing their capability in quality management. With members all over the world, we are uniquely placed to define and lead the quality profession, setting the standards for its capability and scope through the CQI Competency Framework.

Vision: A world in which all organisations optimise value for their stakeholders through excellence in governance, assurance and improvement.

Members: CQI is the only professional body able to award Chartered status to those whose job it is to deliver excellence in organisations. Quality management is a broad discipline and membership of the CQI caters for both individuals who have wide-ranging roles, and those that may specialise in aspects ranging from business improvement to audit and customer insight.

Approximate number of members: 10,000

Grades of Membership: Student; Affiliate Practitioner (PCQI); Chartered Quality Professional Member (CQP MCQI); Chartered Quality Professional Fellow (CQP FCQI).

Specialist interest groups: Nine.

Member Benefits

Structure: 28 branches.

Contact details:
Acting Chief Executive: Vince Desmond
2nd Floor North, 10 Furnival Street, London EC4A 1AB
+44 (0)207 245 6722 membership@quality.org
www.quality.org

Companies House No: RC000809 Registered Charity number: 259678

The Institute of Automotive Engineer Assessors (IAEA)

Established in 1932. Incorporated in 1939.

Sector: Automotive

About: IAEA is a professional organisation and a qualifying body for those practising the profession of an automotive engineer assessor.

Members: Members work in a range of areas including: vehicles damage assessment; accident reconstruction; mechanical failures; vehicle fire investigations; electrical failures; expert witness; repairer assessment; car fleet surveys; conciliation; and arbitration.

Approximate number of members: 1,200

Grades of Membership: Affiliate (AffInstAEA); Associate (AInstAEA); Member (MInstAEA); Fellow (FInstAEA).

Member Benefits

Structure: Seven regional groups in the UK and Ireland; one international regional group.

Contact details:
Company Secretary: Kate Carter
The Firs, High Street, Whitchurch, Buckinghamshire HP22 4JU
+44 (0)1296 642 895 secretary@iaea-online.org
www.iaea-online.org

Companies House No: 350568 Registered Charity number: 273452

Institute of Asphalt Technology (IAT)

Established in 1966. Incorporated 1980.



Sector: Asphalt technology

About: IAT was founded by a group of far-sighted practitioners in the belief that there was a need for sharing technical information, educating new people into and within the asphalt industry and for setting and protecting standards across the field.

Members: Members work in the field of asphalt technology and are interested in all aspects of the manufacture; placing; technology; and uses of materials containing asphalt or bitumen.

Agreements with licensed institutions to register members: Institute of Highway Engineers (IHE)

| Registration agreement covers: | EngTech | IEng | CEng |
|--------------------------------|---------|------|------|
| Registered members: | - | - | - |

Grades of Membership: Student; Affiliate (AIAT); Technician (TIAT); Associate Member (AMIAT); Member (MIAT); Fellow (FIAT); Honorary Fellow (Hon FIAT).

Contact details:

Business Manager: Russell Hunter
PO Box 15690, Bathgate EH48 9BT

+44 (0)1506 238 397 info@instituteofasphalt.org
www.instituteofasphalt.org

Companies House No: 1526867

Institute of Corrosion (ICorr)

Established in 1959. Incorporated 1976.



Sector: Corrosion

About: ICorr serves the corrosion science, technology and engineering community in the fight against corrosion. Key to this fight is the establishment and promotion of sound corrosion management practice, the advancement of cost effective corrosion control measures, and a sustained effort generally to raise corrosion awareness at all stages of design, fabrication and operation.

Vision: To be known as the leading source of technical information in the field of corrosion and corrosion prevention.

Members: Members include: structural and civil engineers; chemical and marine engineers; metallurgists; cathodic protection specialists; surface treatment specialists and technicians.

Approximate number of members: 1,100

Agreements with licensed institutions to register members: Society of Environmental Engineers (SEE).

| Registration agreement covers: | EngTech | IEng | CEng |
|--------------------------------|---------|------|------|
| Registered members: | 1 | - | 39 |

Grades of Membership: Technician (TICorr); Professional (MICorr); Fellow (FICorr).

Specialist interest groups: Corrosion Engineering Division (CED); Corrosion Science Division (CSD).

Member Benefits

Structure: Six UK regional branches.

Contact details:

Technical Secretary: Dr Douglas Mills CSci FICorr AMIMMM
Barratt House, Kingsthorpe Road, Northampton NN2 6EZ

+44 (0)1604 438 222 admin@icorr.org
www.icorr.org

Companies House No: 1240103 Registered Charity number: 275206

Institute of Concrete Technology (ICT)

Established in 1972. Incorporated in 1985.



Sector: Construction

About: ICT is the concrete sector's professional development body, operating internationally. Formed by those awarded the then new Diploma of Advanced Concrete Technology, it is an awarding body for specialist qualifications in concrete technology and a facilitator of CPD and networking opportunities for its members.

Mission: To preserve and promote concrete technology as a recognised engineering discipline and consolidate the professional status of practising concrete technologists worldwide.

Members: Members include: laboratory technicians; production staff; technical sales representatives; technical managers; university lecturers; and consultants.

Approximate number of members: 500

Agreements with licensed institutions to register members: Society of Environmental Engineers (SEE).

| Registration agreement covers: | EngTech | IEng | CEng |
|--------------------------------|---------|------|------|
| Registered members: | - | - | 2 |

Grades of Membership: Student; Graduate; Technician (TechICT); Affiliate (AffICT); Associate (AMICT); Member (MICT); Fellow (FICT).

Member Benefits

Contact details:
Executive Officer: Edwin A.R. Trout BA (Hons) DipLib MCLIP AffICT
Riverside House, 4 Meadows Business Park, Station Approach,
Blackwater, Camberley, Surrey GU17 9AB

+44 (0)1276 607 140 ict@concrete.org.uk
www.ict.concrete.org.uk

Companies House No: 1895185

Institute of Demolition Engineers (IDE)

Established in 1976. Incorporated 2012.



Sector: Demolition

About: IDE exists to promote and foster the science of demolition engineering. The main objectives include the promotion of use of more efficient techniques in the industry; encouragement of safer methods of working; provision of a qualifying body for the industry.

Mission: To promote and foster the Science of Demolition engineering.

Members: Professional demolition engineers; managers; supervisors; technicians and students.

Approximate number of members: 400

Agreements with licensed institutions to register members: Society of Environmental Engineers (SEE).

| Registration agreement covers: | EngTech | IEng | CEng |
|--------------------------------|---------|------|------|
| Registered members: | - | - | - |

Grades of Membership: Affiliate; Entrant; Student; Technician (TechIDE); Associate (AMIDE); Full Member (MIDE); Fellow (FIDE).

Member Benefits

Contact details:
President: Duncan Rudall FIDE TechIOSH
National Secretary: Maureen Tong-Ralphs
The Joiners Shop, Historic Dockyard, Chatham, Kent ME4 4TZ
+44 (0)1634 816255 info@ide.org.uk
www.ide.org.uk

Companies House No: 8087902 Registered Charity number: 271475

Institution of Diesel and Gas Turbine Engineers (IDGTE)



Established in 1913. Incorporated in 2010.

Sector: Power generation, marine propulsion and mechanical drive

About: IDGTE is the professional institution for engineers and technicians in the diesel and gas turbine industry worldwide. Its mission is to serve its membership by advancing the design, development, manufacture, application, operation and maintenance of reciprocating internal combustion engines, gas turbines and their related fields.

Mission: To serve our members and the industry by encouraging the sharing of knowledge and advancing the design, development, manufacture, application, operation and maintenance of reciprocating internal combustion engines, gas turbines and their related fields. We strive to be the place where all involved in the power and engine industries can develop their knowledge in the field of diesel engines, gas engines, gas turbines and related technologies.

Members: Members are engineers, engineering technicians and companies in the diesel and gas turbine industry and related fields.

Approximate number of members: 400

Agreements with licensed institutions to register members: Society of Operations Engineers (SOE).

| Registration agreement covers: | EngTech | IEng | CEng |
|--------------------------------|---------|------|------|
| Registered members: | 42 | 1 | - |

Grades of Membership: Student; Young Engineer (MIDGTE); Associate (AMIDGTE); Member (MIDGTE); Fellow (FIDGTE); Company; Retired Associate; Subscriber.

Specialist interest groups: Gas turbine; reciprocating engines; operations and performance; and heritage.

Member Benefits

Structure: UK HQ; two international branches.

Contact details:
 Director General: Michael John Raine CEng MIMechE FIDGTE
 Bedford Heights, Manton Lane, Bedford MK41 7PH
+44 (0)1234 214340 enquiries@idgte.org
www.idgte.org

Companies House No: 4244044 Registered Charity number: 1139906

Institute of Explosives Engineers (IExpE)



Established in 1974. Incorporated in 2012.

Sector: Explosives Engineering for civil and defence purposes

About: IExpE is the professional home for all involved in explosives and explosives engineering. It promotes explosives safety and the occupational competency, education and professional standing of those who work with explosives. It also provides consultative facilities for organisations and government departments within the explosives field.

Mission: To promote the occupational competency, education and professional standing of those who work with explosives and provide consultative facilities for organisations and government departments within the explosives field.

Vision: To be the natural professional home for all involved in explosives and explosives engineering.

Members: Members are associated with the explosives industry and their jobs involve all aspects of explosives from research and development through to disposal. Members include: engineers; scientists; logisticians; academics; shotfirers; specialist practitioners and legislators.

Approximate number of members: 1,600

Agreements with licensed institutions to register members: Society of Environmental Engineers (SEE).

| Registration agreement covers: | EngTech | IEng | CEng |
|--------------------------------|---------|------|------|
| Registered members: | 3 | 6 | 29 |

Grades of Membership: Student; Associate (AIExpE); Technical; Member (MIExpE); Fellow (FExpE).

Member Benefits

Structure: Five UK branches; three overseas branches.

Contact details:
 President: Dave Welch MIExpE
 Ground Floor, Unit 1, Greyfriars Business Park,
 Frank Foley Way, Stafford ST16 2ST
+44 (0)1785 594136 vicki.hall@iexpe.org
www.iexpe.org

Companies House No: 7905911

Institute of Mathematics and its Applications (IMA)



Established in 1964. Incorporated by Royal Charter in 1990.

Sector: Mathematics

About: IMA is the professional and learned society for mathematicians. Its mission is to promote and support the understanding, teaching, research and applications of mathematics.

Mission: To support the advancement of mathematical knowledge and its applications and to promote and enhance mathematical culture in the United Kingdom and elsewhere, for the public good.

Members: Members work in commerce, industry, the public sector and all areas of education including research. Many members also work in engineering either as mathematical engineers or within other engineering disciplines.

Approximate number of members: 4,500

Grades of Membership: Affiliate; Student; Associate Member (AMIMA); Member (MIMA); Fellow (FIMA).

Specialist interest groups: Systems and control theory group; computational science; and engineering group.

Member Benefits

Structure: Seven branches in the UK and Ireland.

Contact details:

Executive Director: David Youdan FIMA FHKIE

Catherine Richards House, 16 Nelson Street, Southend-on-Sea, Essex SS1 1EF

+44 (0)1702 354 020 post@ima.org.uk

www.ima.org.uk

Companies House No: RC000714 Registered Charity number: 101777

Institute of Materials Finishing (IMF)



Established in 1925. Incorporated 1951.

Sector: Surface engineering, finishing and coating

About: IMF provides a focus for surface engineering and finishing activities worldwide through the fulfilment of the technical, educational and professional needs at all levels, for both the individuals and companies involved in the coatings industry.

Mission: To provide a focus for Surface Engineering and Finishing activities worldwide through the fulfilment of the technical, educational and professional needs at all levels for both the individuals and companies involved in the coatings industry.

Members: Members are individuals whose work embraces electro-plating; organic finishing; anodising; printed circuitry; PVD; thermal spraying; and other ancillary methods of surface treatment, whether in industry or academia.

Approximate number of members: 500

Agreements with licensed institutions to register members: Society of Environmental Engineers (SEE).

| Registration agreement covers: | EngTech | IEng | CEng |
|--------------------------------|---------|------|------|
| Registered members: | 2 | - | - |

Grades of Membership: Student; Affiliate; Associate (AssocIMF); Graduate (GradIMF); Technician (TechIMF); Member (MIMF); Fellow (FIMF).

Specialist interest groups: Numerous, including: organic finishing group; science committee; and education and training.

Member Benefits

Structure: Three branches in the UK and Ireland.

Contact details:

Office Manager: Helen Wood

Exeter House, 48 Holloway Head, Birmingham B1 1NQ

+44 (0)121 622 7387 helen@materialsfinishing.org
www.materialsfinishing.org

Companies House No: 498619 Registered Charity number: 227068

International Council on Systems Engineering INCOSE (UK Chapter)



Established in 1990. Incorporated in 1998.

Sector: Systems engineering

Book icon **About:** The aim of the INCOSE UK Chapter is to foster the definition, recognition, understanding and practice of world class systems engineering in industry, academia and government.

Mission: To foster the definition, recognition, understanding and practice of world class systems engineering in industry, academia and government.

Members: Members are involved in all aspects of systems lifecycles from concept through to operational use and eventual disposal, covering both technical and management processes, and come from a wide variety of backgrounds and business domains.

Approximate number of members: 1,000

Agreements with licensed institutions to register members: Society of Environmental Engineers (SEE).

| Registration agreement covers: | EngTech | IEng | CEng | ICTech |
|--------------------------------|---------|------|------|--------|
| Registered members: | - | 2 | 21 | - |

Pin icon **Grades of Membership:** Student; Regular; Senior; Member (MINCOSE).

Specialist interest groups: Numerous, including: architecture; capability; model based systems engineering; and rail interest.

Member Benefits

Network icon **Structure:** Regional Groups throughout the UK.

People icon **Contact details:**

President: Ivan Mactaggart BSc DipSysPrac CEng MIET MINCOSE
First floor, The Dyers Building, 21 Silver Street, Ilminster,
Somerset TA19 0DH

+44 (0)1460 298 217 enquiries@incoseonline.org.uk
www.incoseonline.org.uk

Companies House No: 3641046



The Institute of Quarrying (IoQ)

Established in 1917.

Sector: Mineral Extraction and Processing Technology

Book icon **About:** The Institute of Quarrying is the global professional body for individuals who work, operate in and supply products and services to the mineral extractives and processing industry. The home of the Institute is based in the UK but also has Affiliated National Institutes (ANI's) in Australia, New Zealand, Hong Kong, Malaysia & Southern Africa.

Mission: The key role of the Institute is to provide education, knowledge and practical skills to further enhance and develop the science of quarrying and mineral processing.

Members: Members work across a wide range of skills areas which cover all aspects of mineral extraction and mineral processing ranging from skilled operatives, technical disciplines, surveying, health, safety and environmental professionals through to senior managerial positions.

Approximate number of members: 3,500+ in the UK and 6,500+ globally

Pin icon **Grades of Membership:** Student; Associate; Technician (TMIQ); Member (MIQ) Fellow (FIQ); Honorary Fellow (HonFIQ).

Member Benefits

Network icon **Structure:** 13 Local Branches in the UK; branches in Australia, New Zealand, Hong Kong, Malaysia and Southern Africa.

People icon **Contact details:**

General Manager: Mike Phillips FIQ, FIMMM

McPherson House, 8a Regan Way, Chetwynd Business Park,
Chilwell, Nottingham, NG9 6RZ

+44 (0)115 972 9995 mike.phillips@quarrying.org
www.quarrying.org

Companies House No: 606601 Registered Charity number: 244812

Institute of Refrigeration (IoR)



Established in 1899 as the Cold Storage and Ice Association.

Sector: Industrial and commercial refrigeration engineering; process industries; climate control

About: IoR is a central meeting point for people from all over the world to promote, improve and learn more about refrigeration, air conditioning and heat pumps.

Mission: To promote the technical advancement of refrigeration in all of its applications for the public benefit, with a strong emphasis on reducing environmental impact. To achieve this, the Institute encourages invention and research, as well as facilitating communication and the exchange of expertise and views. It provides a central forum for all those involved professionally in refrigeration science and engineering practice and communicates knowledge of refrigeration and its benefits to society.

Members: Members have a professional interest in the practice of refrigeration, air conditioning and heat pump technologies in all of their applications. They are drawn from all aspects of the sector including: technicians; engineers; managers; scientists; and researchers.

Approximate number of members: 2,000

Agreements with licensed institutions to register members: Chartered Institution of Building Services Engineers (CIBSE).

| Registration agreement covers: | EngTech | IEng | CEng |
|--------------------------------|---------|------|------|
| Registered members: | 3 | 2 | 2 |

Grades of Membership: Affiliate; Technician (TMIInstR); Associate (AMIInstR); Member (MIInstR); Fellow (FIInstR).

Specialist interest groups: Technicians.

Member Benefits

Structure: Five UK branches; one international branch.

Contact details:

Chief Executive: Miriam Rodway BA (Hons)

Kelvin House, 76 Mill Lane, Carshalton, Surrey SM5 2JR

+44 (0)20 8647 7033 ior@ior.org.uk

www.ior.org.uk

Charity Incorporated Organisation No: 1166869

Institute of Telecommunications Professionals (ITP)



Established in 1906. Incorporated in 2002.

Sector: Telecommunications

About: ITP is the leading independent body for the telecommunications industry. It represents thousands of members drawn from hundreds of businesses. Formerly known as the Institute of Post Office Engineers (IPOEE) and the Institution of British Telecom Engineers (IBTE), The ITP has a proud heritage, dating back to 1906. The ITP collaborates with regulators, government associations and other leading bodies on a wide variety of projects that are important to the future of the industry, representing the views of its members.

Mission: The ITP is dedicated to promoting the professional and career development of its members through professional registration, knowledge seminars, insight visits and its industry leading publication, *The Journal*.

Vision: With a rich history as the voice of telecoms for more than a century, The ITP's vision is to help shape the future of professional telecommunications. The ITP Apprenticeship Scheme looks to provide a constant flow of highly trained, well qualified individuals into the telecoms sector.

Members: Members range from apprentices and individuals right through to major corporate players.

Approximate number of members: 6,000

Agreements with licensed institutions to register members: Institution of Engineering and Technology (IET).

| Registration agreement covers: | EngTech | IEng | CEng | ICTTech |
|--------------------------------|---------|------|------|---------|
| Registered members: | 2 | 4 | 2 | 29 |

Grades of Membership: Apprentice/Student; Graduated Apprentice; Full (Individual); Retired; Fellow.

Member Benefits

Structure: Regional groups in the UK.

Contact details:

Chief Executive: Crissi Williams

Sunbury TE, Green Street, Sunbury-on-Thames, Middlesex TW16 6QJ

+44 (0)1932 788 861 enquiries@theITP.org

www.theitp.org

Companies House No: 4442329



NAFEMS

Established in 1983. Incorporated in 1990.

Sector: Analysis and simulation

About: NAFEMS is the only association dedicated to the engineering analysis community. It provides vital 'best practice' information specifically for those involved in finite element analysis, computational fluid dynamics, and computer aided engineering, ensuring safe and efficient analysis methods.

Over the past 30 years, its mission has been to facilitate international industry, academic and government collaboration that leverages unbiased multi-disciplinary engineering expertise; improve product and process simulation; have a positive impact on quality, profitability, schedules and safety.

Mission: To promote the safe and reliable use of finite element and related technology, through education, professional development, knowledge exchange and collaboration.

Members: Companies that operate in a broad range of industries, academia and vendors.

Approximate number of members: 1,300 company members

Grades of Membership: (Company membership only) Site membership; Corporate membership; Small Company membership; Academic membership.

Specialist interest groups: Numerous technical working groups, including: analysis management; dynamics and testing; geotechnics; and simulation data management.

Member benefits

Structure: Nine regional groups worldwide.

Contact details:

Chief Executive: Timothy Morris

46 Campbell Street, Hamilton, Lanarkshire ML3 6AS

+44 (0)1355 225 688 info@nafems.org

www.nafems.org

Companies House No: SC127648



Permanent Way Institution (PWI)

Established in 1884. Incorporated in 1908.

Sector: Rail

About: PWI is a modern professional technical engineering institution for rail engineers. Its main objective is to collect and share technical knowledge and best practice in the rail industry. It increases the skills of rail engineers, raises standards and improves efficiency through its services and close links with the industry.

Mission: To provide technical knowledge, advice and support to all those engaged in rail infrastructure systems worldwide.

Members: Membership is open to individuals and companies in the rail industry. Members work principally in the field of rail infrastructure engineering and associated disciplines. The PWI welcomes all engineers: professionally registered; working towards professional registration; or engineers and track/plant personnel who wish to benefit from the knowledge and support provided by the Institution.

Approximate number of members: 3,500

Agreements with licensed institutions to register members: Institution of Gas Engineers and Managers (IGEM).

| Registration agreement covers: | EngTech | IEng | CEng |
|--------------------------------|---------|------|------|
| Registered members: | 13 | 5 | 3 |

Grades of Membership: Student /Apprentice; Member (MPWI); and Fellow (FPWI).

Specialist interest groups: Rail engineering: mainline rail; metro; light rail; heritage rail; and model railways.

Member Benefits

Structure: 19 regional groups in the UK; four international groups.

Contact details:

Chief Executive: David Packer MA (Cantab), CEng, MICE

5 Mount Crescent Way, Warley, Brentwood CM14 5DB

+44 (0)1277 230031 secretary@thepwi.org

www.thepwi.org

Companies House No: 00099838

Safety and Reliability Society (SaRS)

Established in 1980. Incorporated in 1989.



Sector: All sectors across industry

About: SaRS was established to advance education and promote the scientific study of safety and reliability and associated disciplines.

Mission: To represent engineers and scientists working in the important fields of safety and reliability. Our objective is to enhance the professionalism and reputation of all those involved in safety and reliability technology.

Members: Members are safety and reliability practitioners who work at various levels across all industry sectors and in academia.

Approximate number of members: 700

Agreements with licensed institutions to register members: Society of Environmental Engineers (SEE).

| Registration agreement covers: | EngTech | IEng | CEng |
|--------------------------------|---------|------|------|
| Registered members: | - | 3 | 63 |

Grades of Membership: Associate; Student; Associate Member; Member (MSaRS); Fellow (FSaRS); Honorary Fellow (HFSaRS).

Specialist interest groups: Safety; reliability; engineering; risk; and risk management.

Member Benefits

Structure: Several branches in the UK; three international branches.

Contact details:

Chief Executive: Dr Jacqueline Christodoulou MBE CPsychol
CSci AFBPsS

Hollinwood Business Centre, Albert Street, Oldham,
Manchester OL8 3QL

+44 (0)161 393 8411 info@sars.org.uk

www.sars.org.uk

Companies House No: 2348358 Registered Charity number: 801207

The Engineering Council on social media



Keep up-to-date with the latest news from the Engineering Council – follow us on Twitter



Please join our online social network open to registered engineers, as well as anyone who works in the engineering profession, anybody considering a career in engineering, or who has a professional interest in engineering.

Network with your peers, share opinions, ideas and best practice, find out more about the benefits of professional registration, a career in engineering or more about the profession.



Find the latest videos posted by the Engineering Council and its partners.

Useful weblinks

Academic course search: www.engc.org.uk/courses

Benefits of registration: www.engc.org.uk/benefits

Case studies: www.engc.org.uk/case-studies

CEng: www.engc.org.uk/ceng

Engineering Council e-newsletter Engage:
www.engc.org.uk/engage

EngTech: www.engc.org.uk/engtech

Guidance on Risk: www.engc.org.uk/risk

Guidance on Sustainability: www.engc.org.uk/sustainability

Guidance on Whistleblowing:
www.engc.org.uk/whistleblowing

Guidance on Security: www.engc.org.uk/security

ICTTech: www.engc.org.uk/icttech

IEng: www.engc.org.uk/ieng

Information for employers:
www.engc.org.uk/informationfor/employers

International activities: www.engc.org.uk/international

Licensed professional engineering institutions:
www.engc.org.uk/peis

Professional Affiliates: www.engc.org.uk/affiliates

Statement on Ethical Principles:
www.engc.org.uk/professional-ethics

Technician qualifications database: www.engc.org.uk/techdb

UK-SPEC: www.engc.org.uk/ukspec

Engineering Council video:
www.engc.org.uk/videos

Work-based degree programmes:
www.engc.org.uk/engineeringgateways

News: www.engc.org.uk/news

Engineering Council publications

Engineering Council publications can be downloaded from the website at: <http://www.engc.org.uk/publications/>

Hard copies of publications and further promotional tools (posters, information sheets, advertisements, etc) are available from the Marketing and Communications department: marketing@engc.org.uk

- ICTTech - Registering as an ICT Technician
- IEng - Registering as an Incorporated Engineer
- CEng - Registering as a Chartered Engineer
- EngTech - Registering as an Engineering Technician
- UK-SPEC third edition
- ICTTech Standard second edition
- Accreditation of Higher Education Programmes Third Edition
- Statement of Ethical Principles
- Engineering Degree Accreditation
- Engineering Gateways: Flexible Pathways to becoming an IEng or CEng
- Registration for Academics
- Student Guide to Professional Registration
- Guidance on Risk
- Guidance on Sustainability
- Guidance on Whistleblowing
- Guidance on Security



T +44 (0)20 3206 0500
info@engc.org.uk
www.engc.org.uk

Publication of extracts from this document are encouraged, subject to attribution to the Engineering Council

Registered Charity: 286142
Published March 2017
Please visit the Engineering Council website to ensure that you have the latest information.